



ORGANISM THEORY
BY
JAMES PAUL BILOUS



Organism Theory

by

James Paul Bilous

RoseDog  Books
PITTSBURGH, PENNSYLVANIA 15238

The contents of this work including, but not limited to, the accuracy of events, people, and places depicted; opinions expressed; permission to use previously published materials included; and any advice given or actions advocated are solely the responsibility of the author, who assumes all liability for said work and indemnifies the publisher against any claims stemming from publication of the work.

All Rights Reserved
Copyright © 2017 by James Paul Bilous

No part of this book may be reproduced or transmitted, downloaded, distributed, reverse engineered, or stored in or introduced into any information storage and retrieval system, in any form or by any means, including photocopying and recording, whether electronic or mechanical, now known or hereinafter invented without permission in writing from the publisher.

RoseDog Books
585 Alpha Drive
Suite 103
Pittsburgh, PA 15238
Visit our website at *www.rosedogbookstore.com*

ISBN: 978-1-4809-6605-5
eISBN: 978-1-4809-6479-2

Table of Contents

Introduction	v-vii
Absorption and Reflection	1-7
Why Me?	9-13
Integration	15-31
Normalization	33-37
Behavior Modeling	39-53
Organism Theory	55-63
The Human Behavioral Display of Arrogance ..	65-77
Psychologically Caged Animal Syndrome	79-107
On Class, Education, and The Media	79-97
Reflecting On Recent Events	97-99
Production Statistics	100-106
The Impact of Circumcision	106-107
Observing Human Behavior with a New Understanding of Human Nature	109-114
Tribal Aboriginal Society, An Undisturbed Model, Fluidly Adapted	115-118
In Conclusion	119-127
Bibliography	129-130

INTRODUCTION

Only after a life of specific experiences that molded me into this specific form was I able to write this.

Humans are an organism that is actively absorbing and reflecting its environment, and I mean that literally. Especially in consideration of what we think and consume. It is a process that spans our whole lives with an especially sensitive period for absorption in early childhood.

This temporary ultra-sensitivity disappears after the 6th year of development. A comparative study of humans in unique environments reveals this fact, think Hitler Youth. Environmental impressions are acquired by the brain through the body's sensory organs from birth, and as a whole, influences our outward behavior, or our reflection as I think about it.

Humans although are like snowflakes in that no two are exactly alike. For example, some percentage of males with a negative or violent Father influence will either mirror that influence or rebel against it, and strive to model the love they missed in their lives to their own children. The specialty of humans is that we are drawn to integrate and normalize into our environment, throughout our lives and spiritually in early infancy, this is why we survive.

If we were always exposed to the exact same behaviors, we would not have evolved as we did. It is very likely that the reason we only used sharp-edged stone tools for so many thousands of years is because that was all we ever observed our family group members doing as we developed. And we could not independently develop a model in our brain, for example, of attaching a sharp stone to the end of a long stick for piercing effectiveness.

It is the personal individuality of that collection of behavior in the brain of each one of us, and how we end up applying ourselves that makes us special and unique to each other. That's how we refine our own behavior. By nature then we are a didactic based species because we are always learning by the subtle nuances of the existing Human behavior.

In that way also I believe that our 'personal individuality' is what makes us the same to each other. Because each of us possesses a unique individual that's somewhat separate from the others. Even if we come from the same place, we have only ever witnessed things through our own eyes, and which were not ours to have normalized under, but theirs alone, just as yours is private to you.

That is the basis for my remarks on the Book Jacket in reference to Hitler's Youth being 'innocent'. Humans, through a course of initially sensitive development, know not what they do. They will do 'as normal' whatever is presented to them, 'as normal'.

So if like Hitler's Youth we are limited to what we can think about, because knowledge is based on what and who, was in our environment, does that suggest intelligence?

Remembering, building on previous idea's, and imagination can all be performed by an intellectual brain that has reached that level of development. It does not necessarily confirm that we are intelligent.

Having an historical record to draw upon gives us an incredible advantage over our ancestors. Language preserved in writing means that a lot of information can be stored almost indefinitely, and later absorbed in a short amount of time; simply because that content now exists in our environment, for us it was not an effort more complex than reading.

We think we are intelligent, but, the historical progression that had past just before we arrived had handy things like books and educational institutions, such as they are, prepared for us. So we are knowledge loaded, able to study the present, review the past, and look to the future within a very short time frame.

But, without the presence of our own personal historical record as it was, we too would be reflecting whatever else was there during our development, just like Hitler's Youth. I'll be explaining later on that these are processes that Hitler learned how to influence, and it's what you will learn also by reading Organism Theory.



ABSORPTION and REFLECTION

I believe that absorption and reflection is some kind of rule of living cells and organisms, maybe even of life itself! It's how the whole living system maintains balance. The living organisms that exist here now are the way they are because of their historical interactions with the other lifeforms and the environment.

For example, is there an insect that looks like a thorn in an environment where there were no thorns? Do insects in general, mimic other brightly colored poisonous insects; in environments where there are no brightly colored poisonous insects?

For life to exist it must have processed the things in its immediate environment, returning to the same environment the waste of this process. It would reproduce similarly to the cell division its life was originally based on, and eventually returning its own physical structure in death. All of this keeps adding to the totality of the biomass and creates by its mere presence the potential for more life and further adaptation over time.

It is unlikely that life could emerge and grow in conflict with its immediate environment. Although there are lifeforms that survive in inhospitable environments, those stressors were always there. So the life that emerged in that particular environ-

ment, took the form it did, and it did not upset everything else that was already established. Living organisms literally absorb and reflect off of each other, thereby they achieve an integration and normalization for species survival. Life supports other life, and even death supports life.

Intellectual organisms that can communicate ideas highly efficiently should become more successful because language is an exchange of highly nuanced behavior modeling. Think of it like a complex behavioral display that your brain is using to decide what commands to give the body. To be receiving behavior modeling through language at this level of development is still new to humans on an evolutionary time scale. Therefore it is important to always remember that each individual human must have a different ‘totality’ to their knowledge. No two people will experience the exact same things and view it, or remember it, collectively, from the exact same perspective.

It is enough to think of the impact that people have had in influencing the lives of others, at the same time when those people who were influencing them were at a particular point in their own lives.

If we were intelligent I think we would be able to filter out all the information that was not beneficial or that worked against us, and only keep the helpful information. Our reflection is from the totality of what has been absorbed by our brain through our body’s sensors over the course of our entire lifetime. With impressions made in early childhood like a necessary foundation for the rest of our lives.

The human brain seeks out a spiritual harmony with its family group members and environment, if we didn’t, we wouldn’t have

survived this well. It is of the upmost importance that the young grow up to reflect the behavior in their particular family group, because they need to learn the work of survival from them.

Humans therefore have no pre-loading or defense mechanism against corrupted or influenced family group behavior. Like Hitler's Youth, and like the rest of us now who seem inept to change our collective behavior as we continue to spoil the living environment that created and supports us, and all the other life as well.

During infant development I believe that impressions are kind of 'acid-etched' into our brain because the slate is new and needs to acquire Human behavior modeling quickly, before a normal Human can be formed. As soon as infants are able to they reach out with every sensor they have in order to build their personal repertoire of impressions. I believe that the mouth is the most sensitive sensory input for infants, and the reason they put everything in their mouth is because it's the only sense that can taste, and so it adds another layer to their understanding of what they are exploring.

Maria Montessori discovered through a methodological study of children, like many other notable professionals, that children pass through a series of developmental stages as they grow. Patterns of behavior and the fashioning of the personality are established in the brain in the sensitively absorbent first 6 years of life, no matter what's in the environment. It doesn't matter if you're growing up under a Hitleresque regime, or even if you're being raised by dogs!

Maria Montessori in her book, *The Discovery of the Child*, conspicuously recorded Benito Mussolini's presence in Milan

Italy in 1908. He eventually became the President of the Montessori Association of Italy. Information that I don't believe is common knowledge among a majority of people. He had learned from Montessori's research how to deconstruct complex work into each small movement of that particular task. Then these are presented separately, progressively, and in an accumulative effect in the environment. These kinds of nuances can be integrated into language, such as in speeches for example.

With these methods and access to children over time, it is quite easy to put in place whatever belief system you want to; simply by infusing related nuances of a common theme into the language that you use in the presence of children. It is obvious to me that the principles they learned through Montessori were added to what was already known up to then about human psychology, and then applied to adults.

This enabled the aristocracy to perfect, (from their selfish perspective) the behavioral science of social conditioning. We were taught in school to sing our national anthems before we understood for ourselves from a totality of knowledge what those words and history meant. If you wanted the group to be obedient and see things your way, wouldn't you teach them all from the same perspective? And start them young like they do.

Then for the next 12 consecutive years grading the youngest of children in writing several times per year, all the way through their 'behavior was modeled to them', education. What kind of person do you think would come out after a long program of conditioning like that? I'll tell you, it's a person that is now seeking recognition which feels good to them, and avoiding punishment which is not enjoyable, reflecting their historical environment.

In the later 1800's there was a university in Europe solely for political radicals, the teachers as well as the students. At that time in history a majority of humans were not being taught from the same narrowed perspective in a targeted, organized education system as we are today. Individuals were often cast out from their family group during that era for rejecting a class perspective of other Humans.

They were studying unrestricted, uncensored content, and so their behavior, in as far as they were radicals, was a normal Human reflection of their environment. This kind of social segregation and isolation in our society puts the rest of our perspectives in deficit because we are no longer historically absorbing and reflecting off of everyone in the whole family group. Therefore we are unable to detect or see beyond the narrowed perspective presented to us because we did not see any other.

The innate obedience of Humans to voluntarily offer themselves into servitude was observed in writing as far back as 1508 I've been told. Human individuals within family groups have been applying themselves in order to protect and preserve positions of authority over many thousands of years, and which accumulatively generated the culture we are ruled by today.

If we're taught to be obedient, we will be obedient, but, if we are allowed freedom in a natural environment, we are also obedient. And so then if Hitler can teach a population to hate another, can't those same people have been taught instead to work together to satisfy all of their needs? When they tried it was called treason by the state! Now we are 'Ideologically and Psychologically Caged Animals' limited to a single socio-economic perspective promoted to us by 'Hitleresque' educational techniques. And in which conditions, for every 2 seconds that

passes by 1 person has attempted suicide, and 10,000 others are contemplating it, somewhere on the globe.

Since I am not a classically trained scientist I will provide as much evidence and examples as I can. I will outline the related disciplines as I know them, some may be new to you or have a slightly different understanding than you have, and are required reading in order to acquire a totality of understanding from this document.

They are: Maria Montessori and her course of study, Integration, Normalization, Behavior Modeling, Organism Theory, Psychologically Caged Animal Syndrome, and the Human Behavioral Display of Arrogance that discusses the origins of a class based social dynamic and why.

All are interrelated and complicated even further by human produced surplus value that was captured by a minority of society who originally claimed to talk directly to, or communicate in some way with, 'God(s)'.

Over an historical progression (an intellectually applied evolution) this 'group' or 'class' now maintains working producers in their subservient stature by ensuring that they do not have access to capital at the behavior modeling level. This is accomplished by influencing information by nuance over time, and by subjecting a majority of Humans to a wage relationship with their environment which leaves them no choice in how their labor is contributed to the group. We must exchange our labor both mental and physical for wages that perpetually need to be regenerated. Instead of owning all of what we have produced, which was our evolution until fairly recently.

We are not adapted, nor are we evolved to living under stress caused by our social relations within our own family group struc-

ture. So it's not surprising that human society at large is displaying, from the high rate of depression and suicide, symptoms of 'Psychologically' Caged Animal Syndrome. A suffering from the accumulative effect of being driven away from our nature, which is to be part of a whole family group whose work is the work of living.

I will also talk about what I call an undisturbed model. Human Tribal Aboriginal Society/naturally adapted, a fluid existence in balance with life.

This book is not meant to be an exhaustive research or final draft on these subjects because I'm a hobby based kind of scientist. I had no grants or research partners supporting me, and the research encompasses all of what we understand is life. I'm just a carpenter who happened to study Montessori education among other things.

In fact, I don't claim intelligence myself. I was exposed to all of this information throughout my life in nuanced parts, so I am only reflecting here from what is already normal to me. And even then it was only because a drunken exclamation somehow compelled me to begin reading Montessori's works over again, was I able to coalesce all of this information and put into this book.

One reason that you might find surprising for Maria Montessori's success was that a large portion of her education was not predominated by existing male bias. Because she was a female medical student in the 1890's much of her education was separated from the males. Not surprisingly she developed a different opinion than her peers. I share that same advantage now in that I don't have an ulterior motive, or persons of influence backing me, other than to add my infinitesimal amount of pressure towards a better world.



These benches invited people to a place where they were exposed to nature, relaxing in the middle of it with friends. Visitors left many compliments such as “Love This environment”, and their artwork added even more nuance to it over time.

WHY ME

After all this time has gone by since WWII was over, why should someone from Europe for example, believe that a Canadian person claiming to know what Hitler knew is correct or not, no matter what they read! After all, it should be a relative of someone who was intimately involved ...no? Then it should be someone who was at least geographically close to the action when it was happening! Or maybe we should have had to wait until an artifact was found, for example like a long lost diary of someone who knew it all.

Or perhaps you believe that I should be someone with more authority on subjects? One who is very deeply studied in a multitude of disciplines? At least I should be a working Teacher or Professor, if not The President of some well recognized and respected part of society, right?

What I know specifically that can be attributed to Hitler and Mussolini is the scientific principles that they used to influence people to act as they did. From Montessori's early work it is not impossible to learn it just as I did.

I won't even be surprised if some people don't believe what my book says at first. Because based on the Human psychology

that Hitler knew, I expect a large majority of people to reject what was not historically ‘normal’ to them. Then afterwards their behavior would predictably be to look for and highlight nuances that reconfirm whatever was previously ‘normal’ to them.

The weight of our normalization holds us to protect and preserve whatever has been promoted to us ‘as normal’. For this reason Religion and the State enjoy and exploit an historical normalization of their class interests. Reading this book is probably going to confront your normalization. The story of Humans presented in these pages will not match the one historically promoted within our species’ behavior modeling.

To tell you a little about me, I was born in Sechelt, BC. Canada on October 26, 1969. I grew up there until I moved to the nearby city of Vancouver for work when I was 19. I tried many different jobs over the year and now work as a carpenter.

Growing up on The Sunshine Coast was great. I enjoyed many freedoms back then that I know most kids today don’t get to enjoy. It’s a very biodiverse area and the beauty of it filled my eyes as a child. I must have rode my bicycles a few thousand miles around that area over the years.

So how then can a carpenter from a little seaside village in Canada ever possibly learn about the mysteries of exactly what Hitler knew? Long ago, and far away from his sheltered life on the Sunshine Coast. I can only explain it as an accumulation of unique life experiences, that all-together was my very own personal ‘integration’ that propelled me forwards, and this was achieved.

A small part of which was growing up in the groovy 1970’s. In my most sensitive period I absorbed an accumulation of related impressions over time, modeling that some powerful and

mal-intended force was intentionally condemning us to our misery, derisively known as, “The Man”.

I remember there was fun and love as a child, but there was also many forms of abuse that I encountered and witnessed as I grew up. This developed into teenage depression which persisted into adulthood. My battle against depression led me to study over the years about Human behavioral paradigms, illnesses etc.

Sometimes depression interrupted employment and friendships over the years, and along with the cyclical nature of markets I found myself as one of those 400,000,000 others worldwide everyday who feel disconnected and isolated from their larger family group, while living right in the middle of it.

After taking an intensive one year course in Montessori education for children age 3-6 I began practicing some of those principles with the others in my life. It made me acutely aware of the nuanced behavior I was observing and reflecting. Then I saw something that I experienced both as a child and then witnessed as an adult, in a classroom.

When I was in the second grade of elementary school, I remember a time when I had memorized a poem. When I informed the principal and the teacher that I had memorized the poem, I distinctly remember hearing the doubt in the principals voice, “Oh really?” I then recited the poem with no mistakes, and basically no fanfare afterwards, other than an unenthusiastic “Good.”

When I was fulfilling my required volunteer hours for Montessori training in a public school kindergarten class, one of the children had completed a puzzle beside me. The child excitedly sought out the teacher, and with genuine pride told her, that he had done it! Instead of a positive reinforcement which

would have demonstrated the educator's level of training and humility. I sadly heard again the same kind of doubt that I remembered hearing as a child. The teacher said that "It was only because I had helped him that he was able to do it".

And so I saw demonstrated that with just a few words, how a child's small individual victory can be so trampled upon by a thoughtless educator. This is doing no less than inflicting a nuance sized injury to a developing 'adult' Human psyche. Adding an accumulation of those related nuances together over time is predisposing them to all kinds of socially dysfunctional behaviors and mental illness as teens and adults.

I've learned over the years that each time there is even just a slightly nuanced event it gets recorded in the children's absorbent brain just like everything else does, as normal behavior modeling information. I had only asked the child to keep reexamining the puzzle for continuity, to check for himself if it was correct or not. He had done it and corrected it on his own abilities.

I chose to study Montessori education in 1994, and it wasn't until sometime in 2014 that I reminded myself at a party of my Montessori heritage. After that, I became compelled to read my old books again, and I increased my study of related fields that helped to develop a depth of knowledge. Then I began observing different platforms of media content for nuances of 'Hitleresque' behavior modeling. I unfortunately discovered it is much more common than anyone would like to hear, but more about that later.

Maria Montessori had discovered that adult behavior is a reflection of the environment of the child, and that a man or woman has actually been raised by the child who has gone through the foundational work. Her students developed

“charming personalities” and obedience was obtained spontaneously. Through a collection of movements, freely exercised, her students acquired grace and auto-corrected their own behavior. The last book she wrote before she died is titled *The Absorbent Mind*.

Lastly, I don’t feel that I’m special or unique for learning the educational history behind what Hitler and Mussolini knew. After all, I didn’t discover it, I only uncovered it! After the passing of more than 100 years, and then it was only with the nuanced clues that I knew were in Montessori’s works and found in biographies about her. I only had to add up everything I already knew, and write it down in a book. I was learning something new all of the time while writing this.

And just to let you know, this book did change from being about what Hitler knew specifically in regards to the youth’s normalization; to a book about Humans as an organism that absorbs and reflects its environment. I therefore cannot claim to be anything other than a Human organism that has uniquely absorbed and reflected the immediate environment.



Called 'Hero' after the didactic poem I wrote onto the bench. I made this by applying myself in an accumulative effect of nuances using materials that were mostly already there or were easy to acquire. This was the most surreal looking of all of my experimental 'Integrations'.

INTEGRATION

I use the word integration to mean a constant molding of one form into another in a slow escalating progression of exposure to stimuli over time, like evolution. It is a process that can be influenced with intellectual awareness, but more-often content is absorbed and reflected without intent because our lives and language are based on absorption and reflection.

Maria Montessori clearly outlines her educational history in her book, *The Discovery of the Child*. This book was translated into English under the title *The Montessori Method* in 1912. She studied among many others a French physician named Jean-Marc-Gaspard Itard 1774-1838. He was Physician to the National Institution of Deaf and Dumb, and Member of the Medical Society of Paris. He became responsible for a wild boy captured close to Aveyron, France. By Itard's own observations it was obvious from the boy's behavior that he had grown up completely isolated in the forest from a very early age. It seemed he had survived "insulated" in the forest until he was captured by hunters. After many escapes the boy was eventually brought to Paris for care. The boy who was about

age 12 when captured could not speak, and he was unresponsive to verbal instructions.

With Dr. Philippe Pinel helping him, Itard thought the boy to be incapable of learning anything at all. What followed then was an exercise not in teaching knowledge, but in learning to teach a specific individual, by applying the scientific method.

Following guidelines just like the methodological approach he studied his new patient, and instead of waiting for the child to adapt to his teacher, he adapted to his student. He carefully observed the wild child's natural movements, he even had to run after him because at first the boy could not walk, he only ran from place to place. He carefully observed his natural inclinations to conclude the best way of teaching him. His tireless observations are so eloquently described in his book.

The following quotations are from Itard's book written in 1802: AN HISTORICAL ACCOUNT OF THE DISCOVERY AND EDUCATION OF A SAVAGE MAN, or of THE FIRST DEVELOPMENTS, PHYSICAL AND MORAL, OF THE YOUNG SAVAGE CAUGHT IN THE WOODS NEAR AVEYRON, IN THE YEAR 1798.

Page 33 "If, at any time, a boisterous wind arose ; if the sun, concealed behind a cloud, suddenly burst forth, brilliantly illuminating the surrounding atmosphere, he expressed an almost convulsive joy by thundering peals of laughter."

Page 39 ... "Sometimes, instead of joyful emotions, he exhibited a species of madness; he wrung his hands, applied fists to his eyes and gnashed his teeth and became formidable to persons about him. One morning, after a heavy fall of snow, as soon as he awaked, he uttered a cry of joy, leaped from his bed,

ran to the window, afterwards to the door, going backwards and forwards, from one to the other, with the greatest impatience and, at length, escaped half-dressed into the garden. There he exhibited the utmost emotions of pleasure; he ran, rolled himself in the snow, and taking it up by handfulls, devoured it with an incredible avidity.”

Page 40 -41 “But he did not always manifest such lively and boisterous expressions of joy at the Sight of the grand phenomena of Nature. In some cases they appeared to induce the quiet expression of sorrow and melancholy: a remark hazarded in opposition to the opinions of metaphysicians, but which we could not avoid making, when we observed this unfortunate youth, with attention, under the operation of certain circumstances. When the severity of the season drove every other person out of the garden, he delighted in taking many turns about it; after which he used to seat himself on the edge of a bason of water. I have often stopped for whole hours together, and, with unspeakable pleasure, to examine him in this situation; to observe how all his convulsive motions, and that continual balancing of his whole body diminished, and by degrees subsided, to give place to a more tranquil attitude: and how insensibly his face, insignificant or distorted as it might be, took the well-defined character of sorrow, or melancholy reverie, in proportion as his eyes were steadily fixed on the surface of the water, and when he threw into it, from time to time, some remains of withered leaves. When, in a moon-light night, the rays of that luminary penetrated into his room, he seldom failed to awake out of his sleep, and to place himself before the window. There he remained, during a part of the night, standing motionless, his neck ex-

tended, his eyes fixed towards the country illuminated by the moon, and, carried away in a sort of contemplative ecstasy, the silence of which was interrupted only by deep-drawn inspirations, after considerable intervals, and which were always accompanied with a feeble and plaintive sound.”

Page 11 “if it had not been as much my desire as it was my duty to prove, by the success of my first experiments, that the child on whom I have made them is not, as is generally believed, a hopeless idiot, but a being highly interesting, who deserves, in every point of view, the attention of observers, and the assiduities which are devoted to him by an enlightened and philanthropic administration.”

The study of this child was also compared against other instances of wild children, two girls abandoned together is very interesting. One wild girl was caught in 1731, around Chalons-sur-Marne. She was then educated in a convent under the name of Mademoiselle Leblanc.

She related to them, as soon as she could speak well enough, that she had lived in the woods with a companion, and that she had unfortunately killed her by a violent blow on the head one day, when, upon finding a chaplet (religious necklace or head wreath) under their feet, they disputed about the exclusive possession of it.

Why this girl could be educated, Itard states on page 6-7, “the reason is, that having lived in the woods with a companion, she was indebted already to this simple association for a certain development of her intellectual faculties.”

He continues on about the girls, “This was, in fact, an education such as Condillac speaks of, when he supposes two chil-

dren abandoned in a profound solitude, in whose case the sole influence of their cohabitation must give scope to the exercise of their memory and their imagination, and induce them to create a small number of artificial signs.”

Page 2 “Man can find only in the bosom of society the eminent station that was destined for him in nature, and would be, without the aid of civilization, one of the most feeble and least intelligent of animals; a truth which, although it has often been insisted upon, has not as yet been rigorously demonstrated.”

It seems even our individual senses go through an independent normalization in our early years. Quoted from page 80 of Itard’s book, “If the hearing did not express the same susceptibility for the sounds of the human voice, for the explosion even of fire arms, it may be accounted for from that organ being little sensible and attentive to any impressions except those to which it had been long and exclusively accustomed.”

He said the period of early childhood is like “What may be called the apprenticeship of the senses,” p80. Although he was unable to teach the boy how to talk fluently he understood that he did already have what he called a “language of action” and said that it was “entirely natural to him.” For example, he would often lead people by the hand to his want and touch it to indicate his desire for it.

“The child knows nothing; but he possesses, in an eminent degree, the susceptibility of learning every thing: an innate propensity to imitation; an excessive flexibility and sensibility of all the organs” p90.

“Contemplated in the earliest stage of his infancy, and in regard to his understanding, man appears not as yet elevated above

other animals. All his intellectual faculties are rigorously circumscribed within the narrow sphere of his physical wants.” p109.

Itard mentions of the methods he employed: “These means consisted simply in placing between him and his wants, obstacles that are continually increasing, and continually changing in their nature, and which he could not surmount without perpetually exercising his attention, his memory, his judgment, and all the functions of his senses.” p110-111

Of the wild boy he named Victor, and his challenges in teaching him he states. “When one presented itself of an insurmountable nature, which obstinately arrested me in my progress, and forced me altogether to renounce my method of proceeding.” p117

He talks about what he has learned over the course of educating this boy. “It seems to me, at least, that the following conclusion may be drawn, that moral superiority which has been said to be natural to man, is merely the result of civilization, which raises him above other animals by a great and powerful stimulus. This stimulus is the predominant sensibility of his species; the essential property from which flow the faculties of imitation, and that unintermitting propensity which forces him to seek, in new wants, new sensations.” p142/144

Itard took great care and patience, he used a gentle and gradually progressive approach to his education, and he made the environment inviting for him. He was able to teach the boy some skills, and had made significant progress in comparison to when he was first found.

The behavior of this child provides an excellent example demonstrating that ‘intelligence’ is more a reflection of the en-

vironment that one had sensitively developed in, than it is an indicator of inborn intelligence. Humans are absorbing and reflecting the accumulating nuances in their environment, no matter if they lived alone in the forest or were growing up in 1930's Germany.

It was assumed by some people that the boy had some degree of autism. It was also assumed by many that he couldn't have survived alone in the forest before he was at least 5 or 6 years old. I believe that he had passed through his early formative period mostly alone in the forest. He would only have had to be developed enough physically to be able to move around in the forest environment, since we know that enough food was available to him because he survived.

If he had been 5 or 6 years old when abandoned then Victor would have been able to reproduce language and other human skills easier than he was able to. Because his sensory organs would have been imprinted to a higher degree with those movements. And if he was able to find food on his own with no training at that age, then why could he not do it at 3 or 4 years old?

The only thing that was 'wrong' with Victor, besides the result of his early abandonment, was in fact our own perception of how he should be behaving. Because he is a Human being like us we have an automatic expectation that other Humans should act similarly to a majority of us. We do not take into consideration an individual's personally private historical integration into their immediate environment, we should.

So we may be easily led to believe that there is something wrong with them, or that they are not intelligent. When in fact they are behaving normally, because normal for Humans is

based on what was ‘integrated’ in their environment during their sensitive early development. Hitler’s Youth proves this fact beyond a shadow of a doubt.

That unfortunate, lonely child had perfectly absorbed and reflected the environment that he spontaneously ‘integrated’ into, all by himself. This in fact is what’s ‘normal’ for any Human to do, under any sort of circumstances you can dream of, even good ones.

If intelligence is a thing in Humans, it must be measured by their response to the environment. The response should reflect that a thought process has taken place, and a conclusion has been reached that is based on a ‘totality’ of information taken into examination. The answer that they reached should then address the source of their ills. The answer would not simply and endlessly combat the symptoms of a disease which they are not even aware of. Without knowing absolutely everything, and being able to cross reference that information without biased interference, it is impossible to have an intelligent, intellectual response.

Maria Montessori from early on in her career had worked with disabled children. She was able to teach them to the level where they could pass the exams of the non-disabled children. She was not surprised by this as much as she was shocked by the realization that the existing education system had reduced those ‘normal’ children to the equivalent level that her own unfortunate students were actually able to reach! After that she privately began questioning the motives of the existing education system. She became ever more intrigued about what the hidden potential was of non-disabled children. Armed with the

knowledge of Itard, Maria began adapting didactic learning materials for teaching the non-disabled.

Her students learned to write before, or at the same time as they started reading, and they were able to do this at 4 years old. The skills the children would need to perform work of a complex level were integrated into the environment in nuanced increments. Seamlessly the children learned by their own efforts, and were never corrected or assigned a performance grade.

Montessori's thoughtfully Prepared-Environment allows children freedom and liberty in all of their activities; only crude and abusive behavior was ever acted upon. A true Montessori teacher plays the role of a guide in the child's education, and because the children act freely they correct and learn from each other like normally would occur in nature. It was noted that a few of the children had achieved reading and writing without having had any teacher led lessons.

Infancy is a very sensitive period for absorption, because no previous models exist in the brain for survival they must be acquired quickly, and in early development impressions are permanently etched into a malleable, forming psyche. Receiving a normal human range of impressions provides the foundational material for the mind to establish what I think may act sort of like a default command-prompt in the brain that was needed to be a normally functioning adult within the group they were born into.

Adults also will absorb and reflect nuances of behavior if exposed to an accumulative effect of exposures over time, establishing a 'normalization'. This will be particularly easy if the behavior is modeled from a previously established authority per-

spective, or is a trusted family group member. It's important to know where this line of pedagogy comes from in order to see how it was applied in more recent history.

This quote is (was) from one of Montessori's books, and has been removed in compliance with the copywrite holders wishes. Of her books, the first rewritten and based on her early work, *The Discovery of the Child*, and later *The Secret of Childhood* Published in 1936, are required reading for anyone trained in the method that bears her name. I want to mention here, in case it's not common knowledge, that Mussolini had become a registered teacher in Italy sometime between 1901 and 1902.

Quoted with permission, from the book written by Elizabeth Hainstock, *The Essential Montessori* © 1978, 1986, Updated Edition, the following selections are from page 16. "Hitler and Mussolini were both interested in the method as adaptable to mass education, a means of creating a new social order through the education of the infant ...She did not agree with this particular end result.... Mussolini became the President of the Montessori Society of Italy, and Montessori schools abounded. .. By 1934, however friction had developed between Dr. Montessori and Mussolini's leaders.... In 1935, the Montessori Method was forbidden in Germany by Nazi police, and by 1936, all of the schools in Italy had also closed. ...When Hitler marched into Vienna in 1938, the existing Montessori schools there were also shut down."

On page 3 Hainstock's book reveals; "Moreover, some people involved with the method were unwilling to share ideas and fostered an aura of secrecy, implying that only a special few could understand and impart the knowledge of this educational ap-

proach. This attitude tainted the method and made people arch their backs whenever it was discussed.” The same book also mentions that in 1926 Mussolini had a one-time private meeting with Dr. Montessori but doesn’t elaborate on what was discussed.

It appears very much as if they were attempting to cover their tracks before this, planned for a long time, war had begun. The bourgeoisie were quick to adopt her method, opening schools for their own children. It is noted many times in her books and biographies that foreign leaders and visiting dignitaries were interested in the method.

Through Montessori and her course of study they had the access to learn about slow non-confrontational integration of organized sensory stimuli. Breaking up complicated or multi-disciplinary tasks or ideas into an accumulation of smaller nuanced impressions. Mussolini would have also been exposed to Maria’s term of ‘Normalization’ from very early on. The initial media response after her experiment raved of “Converted Children” which Maria referred to as their normalization. They would have also learned that in the formative period obedience is spontaneously manifested in children who have normalized in a self-directed environment that’s free from developmental obstacles.

They’d have also heard about collective obedience. This manifested in her experimental classroom because each child had already developed the capacity to control themselves, so it was not some kind of a collective mind control, just the expression of innate obedience and self-disciplined children. Although initially the concept of collective obedience could have been easily misunderstood, and or also applied experimentally to integration and normalization.

The children in her classroom became happy, confident and eager to please. They were only able to reach this level of development because of what I believe is an understated factor of Maria's experiment. It was the absence of being 'Behavior Modeled down' from an arrogant family group authority figure. A high percentage of teachers are in fact promoting the social exacerbation of bullying, by their accumulative nuanced modeling of it! And are one of the leading sources that's causing a majority of today's schools to ironically support anti-bullying programs. Such is the sensitive and nuanced nature of Human behavior modeling!

A teaching methodology based on observation and assistance such as Montessori education is, cannot omit the impact of the nuanced content of the adults present in the child's environment. I have witnessed this nuanced behavior modeling on a few occasions while visiting classrooms on student observations.

Being "Modeled down to" can be loosely defined as any nuanced expression of arrogance. In an environment where you were not empowered to make decisions independently or you had to ask permission from authority figures who held titles were they had none. If you are openly and regularly judged beside others, and or graded in writing, etc. It's all behavior modeling children to a value that is externalized from themselves, and is a judgment of their performance when none was asked for, nor needed. I am quite sure that the behavior modeling of the teachers is a large part of what prevents most modern Montessori schools from achieving the same results that Maria achieved in her experimental classroom.

Mussolini, and his supporters I believe studied obedience to authority figures, in children and adults. Not a far stretch considering some of the other terrible things they did. Among them I believe is also that of broadcasting arrogance intentionally, knowing the behavioral sciences behind it. I believe this because of his completely obvious behavior modeling of arrogance. Psychological experimentation also would not have left much of a trail behind it at all; until later when you could look back and realize that it was the blindly indoctrinated adult that they wanted all along. The children were used as the vehicle to achieve that kind of adult, and integration was the principle that was used against them.

They would have also witnessed for themselves as leaders how eager people are to please them. It's most likely that from quite early on it was tested how far an authority perspective could influence a lower ranked Human in different situations. These kinds of tests at the time would have included aspects of integration, normalization, and accumulative effect of nuances.

Hitler had a whole department of Government employing many people, aimed at developing and sourcing suitable nuances of behavior modeling propaganda. They conditioned the population over time using known principles of behavior modeling psychology.

I recommend that you study Milgram's Obedience To Authority Experiment if you have not. And do not overlook the fact that they had placed the subjects in the authority position of 'Teacher', who along with, 'The Professor' tortured the lower ranked 'Student' to death almost 80% of the time! Then apply that principle to an accumulating effect of ideological behavior

modeling from authority figures into the minds of organisms that fluidly absorb and reflect their family group environment! Religion(s) should be thought of from this perspective.

WWII was carried out with clear intention and very long-term planning by a consortium of major players. By slowly integrating behavioral modeling of sick cultural beliefs which included hatred for Jewish people among others, it was quite predictably reflected back in the observed behavior of the population. What the German people did was normal at that time and place in history, because it was presented as normal in an accumulative effect of nuance exposures over time from established family group authority figures.

The State had used them as pawns then, as they've always done. So it wasn't any fault of the working class population, they were simply reflecting their own family group behavior. I know it may sound like an over-simplified explanation but this is a fact of how humans operate.

Integration can be applied to the historical development of the life forms on this planet. The complex web of life that we see now had always evolved in the presence of the other life forms around it. A history that reaches back at least hundreds of millions of years. Therefore over time there was an integration of all the environmental relationships which led to their current form and behavior. Had any of those historical facts been different than they actually were, the life we are seeing now would be reflecting nuances of that influence.

Maria Montessori applied a methodological approach to study the natural behaviors of children. Only because of her thorough and unobtrusive observations was she then able to de-

velop didactic materials for tasks that required a collection of skills. This makes the more complex work that you wanted them to do all along come to the children very easily and feel natural to them.

Integration is a methodological tool that intellectual organisms can learn to apply by thinking about the totality of the content they are absorbing and exuding. Then adding slightly enhanced content being reflected towards that which the 'influencers' want to see reflected back at them in the end.

Let me quickly state here for clarity that the scientific tools that Mussolini and Hitler used have no inherent background of evil, or of some kind of a bad influence in its nature, it's just nature. What matters is who and why it is being applied to someone, because these exact same principles can be applied to making Human groups friendlier towards each other. Just as it is still being used to teach hate, it could teach love on the same scale.

The State, first it was religious leaders, applies integration by happenstance because since Human individuals first became arrogant from bestowed authority, each generation of 'behavior modelers' from then on spontaneously protected their spoiled position with a selfishly applied behavioral strategy. A normal response from an intellectual organism that is working to maintain a favored and enjoyed position within its family group. So after all this evolutionary time we should be seeing the selfish fetishism that we are seeing in the world.

Everything that was integrated is normal to us, but that normal falls under the Hitleresque definition of normal. Broadcasted from the arrogant 1% for many 1000's of years now. It

is not what was historically normal for Humans because that normal has now been influenced by an external force so they are not existing in a 'normal' environment to judge their behavior as normal.

Now State and Capitalist machinery is so deeply entrenched that each ruler has to only make subtle nuance changes, and work in general to maintain her/his position of authority. They also work to protect positions of authority in general for the next generation of arrogant behavior modelers.

The ruling class having adopted Montessori education for their own children means they were raising them in an environment that germinates an obedient, cheerful spirit! One that is not questioning its environment because it has learned of no conflict, and they cannot think independently to question that their reality has been influenced in some way.

As a somewhat questionable example of an applied course of integration, consider the progression that pedophiles often follow when they have ongoing access to the victim. They follow a slowly progressive and accumulating course towards the behavior they ultimately want to achieve. They do not want to shock the victim into noncooperation early on by too sudden, or too sharp of an impression. Step by progressive step until they are doing what they wanted to do all along. When they have ongoing access to the victim, a process known as grooming.

Integration can be compared to the process that Bruce Lee went through in order to develop his fighting style known as Jeet Kune Do. His eventual style, which was more of a disciplined form of artistry than it is a style, did not just come easily

to him without effort. He had to apply himself to a very high degree, and over time also. And for him, this did not conflict with the natural direction he was heading in his life. He was naturally applying himself to his fluid art of fighting, and he was literally becoming integrated with it.

Bruce Lee is well known to have said, “Be like water.” Meaning to train and prepare yourself for any eventuality, just as water instantly takes the form of the vessel it is poured into, we should also prepare ourselves for the unpredicted and the unsuspected. Therefore the reason why he didn’t follow anyone else’s style was because that style would actually handicap you in comparison with a free flowing form that could adapt to the situation at hand.

Lee’s strategy, from an energy use perspective, was to first conserve as much energy as possible, then focus that stored energy into a sudden powerful release. This minimizes energy expenditure overall because it was intended to accomplish its goal quickly, and didn’t need to be repeated as often as many light strikes would.

His training regimen is world renown. Through his own course of ‘integration’ he memorized the mental and muscular movements necessary by practice and repetition. For example, how many times would he have studied what the potential responses were to a particular kind of attack, from a particular direction for example, in order to determine an appropriate or range of possible responses? These movements had to be memorized by his muscles and brain through a consistent regimen of practice and study in order for it to be applicable in the real world.



When things appear that are not in the form we 'normally' experienced it in, we often can't easily recognize it under different conditions. Do you know so easily, what this common plant is? It's not usually normal, outside of gardeners, to see this plant at this stage of growth. It looks quite different on our dinner plates.

NORMALIZATION

In this Chapter I want to first describe for you what Maria Montessori meant by the word 'Normalization'. Because I told you earlier that Mussolini heard of this concept from her! I want it to be very clear to the reader that how Mussolini and Hitler applied the theory of normalization to experimental psychology, is definitely not what she meant by the term, normalization.

This 'normalization' was achieved in her experimental classroom because she followed the children as they developed themselves under prepared observation and guidance. The psychic needs of the developing children were satisfied over time. Obedience was obtained spontaneously without a show of force to elicit it. And all of this was achieved in a 'Children's House' with 40 – 60 previously traumatized children working approximately 14 hour days.

Maria mentioned that many visitors observing her experimental classroom were frequently observed with tears in their eyes as they watched children make and serve hot soup to the other children. They voluntarily and spontaneously assumed work roles in what is part of the fluid learning process that chil-

dren are constantly engaged in, and is what is normal when it is available.

What is normal includes all of the nuances of behavioral modeling, even those found in books, and the history of what you've personally been exposed to. This is what I refer to as an individual's 'totality of knowledge'. Our brains use this collected information to execute the movement of the body, and forms our ideas of normal.

When something happens that doesn't agree with this normal our brain mostly skips over it, or we use deference and minimizing strategies against un-normalized knowledge, what you'd call cognitive dissonance. I think that this is by the design of evolution, and is a force that historically preserves our in-group behavior modeling. It works to maintain our identity within our own group by not recognizing unfamiliar information, thus protecting the developed behavior modeling.

Behavior modeling from a previously established authority perspective or close family group member is information that's received as normal, whether it was influenced or not. This is why our media culture promotes the higher value of an individual 'winner'. Rewarding only one person with the biggest prize, forgetting all but the few top finishers. It impresses our brain in nuanced ways because we are mirroring the others in our family group, and now we've witnessed them getting a reward and social recognition! They are teaching us the value of the 1% right in front of us.

Simply witnessing just a little recognition by others, as is common in food commercials is all it takes, we want it also now. But, it's because we wanted to feel good to, not because we

wanted that thing that reminded us in the store of being specially recognized.

When a family group member or family group authority figure gives us information it is not normally questioned. And why would we ever doubt our own family? There is no reason historically to question or distrust information from your own family group. It is a survival strategy for Humans to mirror the behavior of their family group. This includes their spoken language which is an auditory exchange of behavior modeling, reinforced by accumulative effect and group authority or kinship relationship.

It is misinformation that we are naïve, we need to acquire survival behaviors from the family group we grow up in or we will not learn those survival behaviors as normal. The need to acquire behavior modeling as we grow is the strongest evidence that there is no pre-loaded intellectual information transmuted to infants through genes or innate intelligence.

The process of normalization is tied up with integration because the new information you're being normalized to is built upon the information of the day. For example if you were intentionally following an accumulative effect of what's normal, you have to maintain a steady progression or you risk shock to your subject by too sharp of an impression.

One of the World War II documentaries depicts a teacher in a classroom outlining the costs carried by the state to support disabled people. What if the persons doing this were coached by behavior modeling directed at themselves to do this, and made facial expressions of disgust while talking about "these other people"? They likely explained to the children that they'd be made to work harder because of these 'inferior' people, and

that they'd be paying more in taxes to support them. This would build a many layered model of resent and disdain in relation to a specifically targeted group in a single 'grand exposure'. If it's coming from a family group authority figure, whatever you want can be made to be 'normal' when it's displayed in an accumulative effect to young children; and particularly effective when it's accompanied by base expressions like disgust or fear, pre-language, language.

The Etoro People of Papua New Guinae are an excellent example of normalization within an isolated family group of absorbing and reflecting social organisms. They are a tribe of the Southern Highlands Province of New Guinea. They're somewhat infamous because of ritual homosexual acts involving boys 12 -17 daily ingesting the Semen of their elders. Because they believe that Semen contains a high amount of 'life force'. Women are seen to waste this 'force' if they do not get pregnant after having relations. Old age is also viewed as a depletion of this 'life force'.

So why then, if the elderly get weak, aren't they the ones who need it the most? At what point could a child ask for his semen on a leaf? Would you have considered him a radical? He would still be ingesting it! It was not the youth alone who supported this social initiative, but it was their normalization, historically broadcasted from the group that compelled them to do it 'as normal'. The predicament of Hitler's Youth was only different because it was recently all intentionally applied content that infected their group dynamic in a negative way historically.

A grouping of Humans then will not simultaneously all think the same thing without an historical progression of nor-

malization towards that point. Language meant that it was possible now for individuals within the group to influence the whole group's behavior. Taking into account an appreciation of their historical normalization isolated groups can only ever add a little to what they all, already consider normal, which is all that they all know due to their isolation. At what point in time will we question our normal? In the face of imminent environmental collapse based on our exponential rate of growth we have yet to.



The most popular of all of my applied integrations. This spot quickly developed a non-threatening evil motif, supported by the poem written on the table top. I saw up to as many as 13 people at one time enjoying themselves here. Those who knew about it enjoyed coming here, and some even helped to keep it clean. I was always honored and thanked by the users for making these spaces.

BEHAVIOR MODELING

A behavior model is the collection of sensory inputs in the brain that provide understanding of specific things in our environments, and when we think or experience specific things, all of these impressions are accessed in order to execute a response.

For example, blind children often experience difficulties exactly reproducing language because of their lack of sight during their learning process. An infant's brain needs the inputs from all of the body's sensors in an accumulative effect in order to begin mimicking/reflecting behavior exactly. Mimicry in infants is really practice along the way to mastering behavior and becoming a productive family member.

A model can be the definition of a word that was constructed by all of the inputs you've received from the environment, and the detail to which you remember these. These models can be incorrect or incomplete, resulting in a fragmented or biased model of understanding. We are never aware of this though, like Hitler's Youth or the Etoro Peoples. Our outward behavior is driven by a collection of these models which can

have nuanced differences in each of us because individuality and witnessing events plays a big part.

Behavior modeling is the active process of building or refining models of understanding in the brain which in a very real sense, because our earliest impressions are foundational, influences our behavior as adults. Modeling behavior from an authority family group member in an accumulative effect of nuances to achieve a predetermined outcome is what Hitler and Mussolini did. The knowledge of integration and normalization helped to perfect the science of social conditioning, the accumulative effect of propaganda broadcasted over mass scale media.

Maria Montessori's work, *The Secret of Childhood*, was originally published in 1936, not long before WWII. I had some excellent quotes here in my book that I wanted you to read; unfortunately, my request to use the material was denied by the copyright owner, due to the subject matter of this book. The selections that were here, were all from chapter 14 of that book, titled, *The Substitution of The Personality*.

Models of behavior are sensitively absorbed in infancy, and those patterns established in the growth period up to around the end of the sixth year can become set patterns for life. The organism driven by the brain seeks to match its behavior with what was observed through the senses. The power that behavior modeling has is that it can normalize you to anything during your sensitive development.

The 1% having learned of these behavioral techniques along with Mussolini, and having total influence of the media are literally controlling our thoughts by limiting or instigating the 'nuances' of what we are exposed to. All of this while modeling to us

historically from a family group authority perspective, and always working to protect their minority interests with a selfish response.

Behavior modeling is simple enough to understand. When the group that you're a part of starts running, you will likely automatically start running also, without questioning why everybody's running. Can you imagine if we grew up behaving differently from what we observed? We would not have survived this long, and would not have done this well.

Any behavior displayed by family group members that was witnessed can be instantly copied by a matured intellectual organism of the same species. The complication of language over an accumulative effect means that the models in each human brain are slightly different, because no two humans have received the same accumulative exposure, and view it from the exact same perspective.

The State, Government, Leaders of each Country, (also applies to Religion) actively models behavior to its population. There was recently a very clear example of this in Quebec, Canada. The Charter of Quebec Values was a bill introduced in the Quebec Parliament that included a provision that would restrict government employees from wearing religious head-wear. Ever since the introduction of this bill, a measured increase in verbal and physical attacks, as well as other forms of discrimination were reported by the veil wearing Muslim population.

North Carolina's law prohibiting transgendered people from using the bathroom of their preferred sexual identity was no different from a broadcasted behavior modeling perspective, it was just discrimination aimed at a different minority population. Unfortunately these nuances are leading by example to exacer-

bate more discrimination against the victims, because family group authority perspectives had already modeled the behavior.

Simply proposing laws like these is enough to embolden some individuals to more openly express their racism, because family group authority figures had modeled the discrimination for them first. There is a percentage of those who already express their racism openly, but since the state was in the process of setting the example of discrimination, more people openly expressed it. Citizens feel empowered to exude or reflect the same attitude toward the targeted group. And for the rest of the population who don't openly express discrimination, the exposure to the Law had added another exposure to their model of bias against the discriminated group.

A similar thing occurred in North America immediately after the September 11, 2001 attacks in New York City. Because the event was linked to Muslims in general, there was a measured increase in the behavior of some percentage of the population. Many victims of discrimination during this time were not even Muslim, if you looked similar enough to the stereotype that was all that was needed.

Every nuance of what The State or Religion does is 'behavior modeling' to the exposed population, and the people at the top have known this for a long time. National indoctrination places itself as your family group authority representative through the constant promotion of Nationalistic attitudes. A historically behavior modeled normalization that gives you a bias against other nationalities.

Because the information was presented to us from a fascist perspective that has, since the appearance of arrogance in human behavior modeling, actively pursued to protect its

spoiled position. So what we learn is that our own State or Religion, is the good and right one, among all of the others who have been behavior modeled into question.

Fascism is the behavioral reflection of one who was made arrogant by its environment. I believe this is the key information that Mussolini learned, and that made him the father of Fascism. Intellectual organisms are highly susceptible to apply a selfish strategy after a period of normalization to a preferred relationship within their group.

‘Divide And Conquer’ applies to your own population from the perspective of arrogant leadership. Some cruel Dictators during The Enlightenment period are apparently known to have hired these scientific philosophers and entertained them in their courts. The Enlightenment period coincides with the historical appearance of Nationalism, Capitalism, and the emphasis on Individualism. All of these being a reflection of the ‘selfish-fetishism’ of the minority owning class.

I once watched a promotional film that outlined an educational technique that invites older children to apply themselves to problems in their environment. At one point in the film promoting this program, (names omitted) students were asking questions to the town’s Mayor. A child in the film then asked, “Why are the poor, poor, and cannot help themselves?” The Mayor responded by telling the children that, “These people have something missing from themselves.” I actually placed my hand over my mouth in shock when I heard that because I know that these ‘teachers’ are involved in the same processes of integration and normalization of behavior modeling that Hitler and Mussolini were consciously aware of.

Like it or not they are contributing to the continuance of the class oppression that enslaves us all, and it's being promoted 'as normal' to children by authority perspectives! They are communicating that this section of society is different by their own failings, and is in reality promoting discrimination against others. They are also in the process of establishing a closed group dynamic reflecting discrimination against the poor! It will be a closed-group behavior because they will not share these negative attitudes about the poor, with the poor.

They are using the same techniques as Hitler did but without realizing it, and are having a hugely negative impact. They're reflecting onto children their own learned bias, absorbed from their own life experience, and are reflecting it onto the absorbent minds of children who are in the process of discovering their normal.

To provide another example, in the children's movie *Richie Rich*, released in 1994 and modeled after the original comic book series. One scene quite clearly depicts a behavior reinforcement display. In one scene, the children along with one adult character, are storming a mansion. They use a catapult and some bags of manure to render at least one guard unconscious. One child player in the movie notices a Twinkie snack treat on one of the fallen guards. He then picks it up and says with a smile "Spoils of War." This kind of stimuli, as a nuance part of an accumulating effect, aids in reinforcing War as normally acceptable behavior; in this instance also teaching that there are good rewards to war.

We cannot appreciate the impact that mass exposure of these kinds of stimuli have until we compare it against what Hitler

knew. All you have to do is look around at the exponentially increasing violence in today's world. It's a reflection of their environment, now agitated even more by increasing and grossly obscene media violence that's all too common in today's films and video games. This stress is also from the increasing arrogant behavior modeling displayed between countries, and especially from actions such as Drone Warfare for example.

I can recall in the 1980's that there was concern over the level of violence that was modeled in entertainment wrestling! It was although like a Hitleresque step in integration towards where we are today, seeing the cold killing of others on our screens. All modeled from an authority perspective in an accumulating effect 'as normal'. When Hitler is doing to you, what he is doing to you, can you see it? Did they see it? Obviously not at that time, because they behavior modeled it to them from family group authority figures, it was normal.

State Military memorial events are also a good example of behavior modeling. These annual events actually do more to normalize us to the reality of war than they do towards preventing further wars. Because at these events they don't talk about not having wars anymore, and how we should go about doing that.

Another example of behavior modeling is the bias that trained professionals and students pick up from their teachers and peers. Maria Montessori had to recruit teachers from the regular school system, and most of them had a difficult time adapting to an unfamiliar role. They quickly grew weary of her repeated observations, either unwilling to believe or unable to see that they were interfering with the children's 'spontaneous actions'.

It is noted throughout history, the impact that contact with specific people had in influencing the paths of other people's lives. This process is happening between all of us, all of the time because we are absorbing and reflecting off of each other literally. We are exchanging behavior modeling at a very high rate and level of efficiency, and so our intelligence can only be a reflection of our historical environment.

A stunning example of the transfer of behavior modeling from an authority perspective over media is Orson Wells infamous radio show, *War Of The Worlds*, aired October 30, 1938. Despite the debate surrounding that event, at least hundreds of thousands of people were quoted to have been frightened. Let us estimate then, for statistical analysis, that it was 200 000 people who were frightened. Using the highest estimate of the listener population at 6 million, approximately 3.4% of listeners believed that the broadcast was true.

That estimate is very conservative because I used the lowest available number of those who had a reaction and the highest number of the potential listening audience. Also, many people that listened to the broadcast knew that it was not real because they heard the disclaimer at the beginning of the show. Another large percentage of the listener population did not hear the disclaimer because another popular radio program had ended shortly after *The War Of The Worlds* had begun that day.

This event can be considered as if it were an experiment in psychology that was not premeditated but achieved impressive results. Imagine if you were there, with some other actors and relevant props to reinforce what the panicked people thought

was happening. Or, what if no one had heard the disclaimer at the beginning; how many more people would have been panicked?

This event brings to light an important and worrying fact. Media in general, models behavior from an authority perspective, and because now it's always there we have to factor in the accumulating effect! The radio listeners of Mr. Wells show that day believed what they heard because they had not enough information to believe that it wasn't true.

One of the outcomes of that event was to not use the News Bulletin format in fictional works anymore, because normally we trust that information without question. War Of The Worlds was a population wide example of the influence that broadcasted media has on our behavior, and particularly when exposed to new information that you have not enough prior knowledge of, as it was in this case.

Some people, learned a lot from this event and did not share it with everyone else. I guess you could call it 'Private Capital', that is not under any obligation to share the results of its own research. Just as corporations are beholden to keep private their clients business activities.

The stir that was caused by The War of the Worlds occurred not long before Television was offered on a mass scale, despite the technology being commercially available since the late 1920's. Our Capitalist leaders did learn what Hitler knew after WWII was over. We know because it was reflected in their business decisions, and therefore in what was offered to the population, which was Hitleresque behavior modeling in a lighted box that we pay for monthly!

Now all of that behavior modeling is reflecting from us modern people, as we grimly proceed into the future as this generation's 'Zombie-Capitalist-Youth!' Resigned now to living in the Anthropomorcene, and accepting that you'll just watch it go by because that's what they just told you we would do! Leaving most people very well prepared for a Zombie Apocalypse that can never happen, and ill prepared for anything else that could potentially happen. In all truth we are separated from Hitler's Youth only by our own private normalization, that we are not less weighted down by than they were to theirs.

There was no reason historically to question or doubt the information from your own family group members, because we critically needed all of that information for even basic survival. That we are drawn into our own normalization, no matter what's there, should be normal knowledge from now on. If we had to first question the behavior we observed from our own family group, we would never have learned anything that would historically accumulate. Because we were apparently too busy being intelligent, and we were questioning what we saw, and not freely exercising those observed behaviors when we were in a creative state.

Human knowledge then is a reflection of an historical accumulation of absorbed and reflected behavior modeling, now recorded in writing for thousands of years. It's all reflected forward accumulatively as each one specifically learns it, generation to generation, and is not indicative of genuine intelligence but it does indicate the potential for intellectualness.

The present inherits all of the past, and through its momentum we add to it in nuance and pass it forward. A worrisome

point considering that some states and religious groups have had hateful discrimination literally integrated and normalized by Hitler and Mussolini!

On some level we all know that we're oppressed but we've never been invited to talk about it because it's accumulatively suppressed by a selfish response. So now collectively we are in a Dystopia, due to existing in an Arrogant Leadership Utopia! As a species we have been behavior modeled into this form by arrogant authority. Now Human behavior modeling is in applied motion because the top level of leadership are using what Hitler and Mussolini knew!

I would like to provide some more examples of applied behavior modeling from an authority or family group perspective because it's important to know who, and how it can be applied around you, and to you.

I first heard about this story on the radio last year. In my analysis it is a case of the FBI using the equivalent of applied integration and behavior modeling coaching in its activities. The story is titled, Eco-Terrorist, Freed after Feds Withhold Evidence on Informant's Role.

The story highlights how agents applied their influence on a female insider. They coached her into influencing the group that she was a part of towards taking violent action. The goal being to catch him in the act. His attorneys claim he was entrapped by a teenage informant called "Anna". She supplied their male suspect with food, housing, and bomb making instructions supplied by the FBI with missing key components. She pressured him towards taking violent action. She made him feel guilty for not making a plan and carrying it out, she even threw fits of

rage over his inability or unwillingness to do it. All the evidence that the agents needed to convict him of a crime was a physically prepared plan which she encouraged the suspect to do.

This is an entrapment because that ‘outside influenced’ person now in his life could have been providing the encouragement and financial support that he likely needed to better his life. Influencing him in an accumulative effect towards not taking violent action. Under which conditions anyone would be statistically at least somewhat less likely to take that action.

The behavior modeling that was applied in this case was not aimed towards a proactive goal then was it? If they had a proactive goal in mind from the beginning it would have been a much more economical approach, as it would also be in many other instances.

Such as in the Eric Garner case, he died as a result of a scuffle with police, who all 4 of them piled on top of him when his body was in a state of adrenaline-rush, and needed more air than usual to sustain itself. His evil deed was allegedly selling loose cigarettes! The punishment heavily outweighing the crime, and astronomically more expensive than a proactive methodological approach would have been.

Mr. Big is the name of a strategy that some police agencies use in order to entrap suspects into admitting guilt to the crime that they are investigating them for. The Police agents first have to apply themselves to get close to the suspect, and then start building up the authority of ‘The Boss’ over successive contacts.

The suspect is eventually introduced to “Mr. Big” in private. He then will encourage the revelation of the crime they are investigating the suspect for, in order to establish trust before em-

ployment or business can be considered. The truth is offered by the lower ranked individual who often in these stings admit their crimes as a behavioral display to the, authority-previously-built-up-perspective. The police agents have a depth of knowledge of the suspect and of their crimes, aiding in their infiltration.

Another interesting example of behavior modeling I watched on a Television program. I can't remember the name of this particular program but it wasn't an unusual or special one. One scene in the show depicted a regular guy who was not famous, as famous. He was followed by fake paparazzi trying to take his picture and calling out to him with a name that they just made-up.

When unaware onlookers saw this, many claimed to recognize his name, and to already "like him". Some had their picture taken with him, and were visibly excited after meeting him. They were all set-up though by behavior modeling. None of them had ever heard of this guy before that day in their whole life. It would be correct to say that the observed behavior modeling had told them someone important was there, when there was not.

I believe that these individuals who would embellish themselves are looking for inclusion or participation within their immediate family group, because on a subconscious level they don't feel socially connected to the larger group. So they will often exploit local events just to feel included and will give-in to modeling behavior, long before 'intelligence' is considered. A symptom of a class divided intimate family group, and corrupted human psyches.

As a species we communicated by behavioral displays on a very sensitive scale, long before we were able to use even more

nuanced language. It is therefore most likely that language itself evolved only because of our previously existing highly complex and nuanced behavior modeling.

Even for a Father to betroth his daughter to a man of an increased social rank is a behavior modeling tactic within a class corrupted Human social dynamic. The father is displaying to the wealthier man by sacrificing his own daughter in exchange for attempting to raise his own and his family's perceived social status.

Have you ever witnessed someone in a workplace environment receive a promotion, and then personally feel that the persons attitude towards you had changed? It is quite a common occurrence to which a majority of people admit to have observed if you ask them about it. Those little instances reveal that a change in perception had occurred, and are in fact nuanced displays of arrogance. It is new behavior that's based on their perceived 'higher' family group status. Nuances of arrogance can be observed in a high majority of individuals upon their first graduation into authority.

Humans are therefore not evolved behaviorally to give, or live, under the direct order of other individuals like the current way most of us are now living. It was the explosion of language, its weight amplified exponentially later on with writing, hyper-accelerated human group dynamic behavior modeling, I think that it just may be our, 'social cancer'.

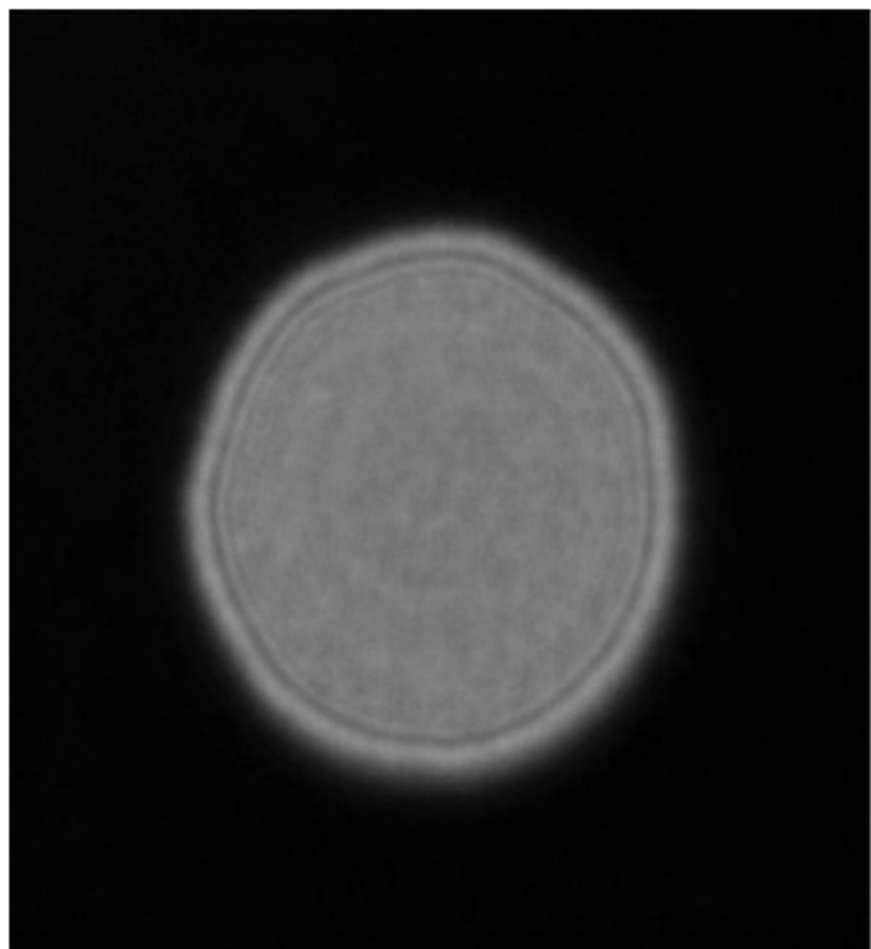
Think of a Turtle as a metaphor for Humanity that you've just entered into a race. You then continually steer the Turtle towards the finish line which reflects your own interests. The Turtle knows nothing of the race, and seeks the path of least resistance. It soon learns that whatever path it chooses will be cor-

rected by someone else. This quickly becomes accepted as the normal pattern of behavior that then becomes reflected in the observable behavior patterns of the organisms/humans.

I also want to state very clearly that individuality is the free radical of behavior modeling, because information is reflected in an array of possibilities. It's almost as if it's reflected from a multi-faceted surface. The integration of the information in our brains, mixed with our personal individuality, makes everything the individual does uniquely their own nuanced reflection.

Humans are an amorphous species because we absorb and reflect everything and anything that's in our environment. From this perspective, the pre-WWII German population could not have thought anything but what they were exposed to over time. It had all been scientifically behavior modeled to them with the highest level of secret knowledge applied. Along with having full access and control of the media and the education system implies that there was clearly cooperation between what Hitler and Mussolini were doing and the interests of ruling Capitalists.

Still though, there is much for us to hope for, having intellect and language really prepares us for practically instantaneous adaptation. It is correct to think that we've evolved to evolve! What they did to the German population, they did in a single Human generation. All that we would need then in order to achieve a positive social evolution is to have a healthier social behavior modeled in front of us.



Organism Theory

Humans, like other organisms, can be expected to take on different physical traits and cultural behaviors in isolated environments over evolutionary time. The supposed different races of humans are simply isolated groups of the same species that have been separated by geography and time. Because all of these different ‘races’ of humans are capable of reproducing with each other, proves that we are still members of the same historical family group, and not that different from each other at all.

Any organism existing in an isolated breeding population should be expected to inherit unique characteristics over time. Because the individuals that make up the group dynamic are always in a process of absorbing and reflecting off of all of the unique and nuanced characteristics of its own intimate/immediate environment.

All of the life on Earth that we see now was always in development together, and is why everything looks the way it does; the living result at the leading edge of the historical life process of Absorption and Reflection. It is not one of Survival of the

Fittest! Nor is it also of an innate competition between species, individuals, or groups.

After many thousands and millions of years of isolation, the same organisms are capable of becoming completely different creatures eventually unable to reproduce with each other. Similar to the way Apes are compared to us as our closest relatives. But when we cannot reproduce with Apes clearly states that Humans and Apes are not historically that close of a relative as we are to all of the 'other' Human groups that we can all still reproduce with. This proves that all Humans share in common a very close historical relation which binds them all to the same greater historical group.

Our most closest relatives are the other, so called 'races', whom with we are able to reproduce with, despite potentially 100,000 years of separation between some groups. The Human diaspora should not be thought of as 'races' formed separately and independently from each other, but as recent branches from the same historical family tree.

Most life on Earth is historically related to each other, and is potentially Billions of years of what amounts to successful cell division that has never stopped in the family lines that are still living. The sad thing is that we've never been allowed to appreciate it. We are hundreds of millions of years old, and we are acting like the spoiled children of The Gods because that's what was in our environment.

Organism Theory can be applied similarly to Cell Theory in the environment, in terms of what the organism does in it and why. Humans though have a high functioning intellectual capacity and use highly nuanced language. Therefore study must

be applied to social groups of organisms that can communicate or behavior model easily and quickly with each other.

Humans can learn critical survival strategies for survival in general by studying what is common to similar forms of life. Following are some of my own observations of how life forms live that we could work towards emulating as general rules or guidelines for our long term survival, and for the health of our environment.

- Organisms consume and utilize the material resources that are within their normal range of movement.
- The area that they extract resources and live receives their daily wastes, and eventually the body that has grown from these consumed resources. Returning biomass back into the cycle from where it came, maintaining balance of the ecosystem.
- Organisms can only know what was in their environment, and they can only know it in the way it was displayed to them. So if something is historically displayed that included nuances of bias, that is the only way they can know it, because nothing else was there to help form their ideas, and their intelligence didn't help them fill in the blanks.
- There is an equilibrium with the environment they are regularly exposed to. They have historically become used to their presence, and anticipate their behaviors all the way down to the rate they reproduce at. They are seamlessly integrated into their environments, and balance is naturally achieved because they were forming all to-

gether throughout history. A collective co-evolution of life because their ancestors have usually always been absorbing and reflecting from the ancestors who were all together at the then leading edge of the life process.

The fact that Humans had wiped out some species in our past, is because in many cases, we were not evolved to each other's presence over a course of history. For example, the reproductive, and maturation cycle of Woolly Mammoth's would have been far too slow to provide a sustainable food source for Humans. While, at the same time, we were not intelligent to realize it, at that time; because we were simply absorbing and reflecting what was in our environment, just like we are all doing now.

- Intellectual organisms with highly nuanced communication abilities have a much broader range of survival skills that successive generations can pass on by means of historically accumulating behavior modeling. We can remember behavior and experiences, as well as use language, and after learning writing and reading, preserve our words as others have already done for us. That whole accumulation is combined uniquely in each of our brains, and it refines our behavior between each other and the environment.

The skills and language we use now is a collection of behavior modeling each successive generation has learned, added to, and passed on by the process of absorption and reflection. Humans now are an anomalous cheat in the environment because we can still learn specific things from our ancestors that have already

passed on. Because we can read their preserved written words, and now have vast libraries of information to study.

If we compare what we know now with what Humans knew 25,000 years ago, it should be thought of as an historical progression of accumulated, absorbed and reflected behavior modeling. It is therefore not intelligence but it is the potential capacity for intellectualness. Humans long ago were not less intelligent than we are today, but they lacked the passing of an historical progression to have benefitted from like we have available to us now.

People living back then were equipped to learn what we know also, had it been in their environment to experience over a life-time course of development. Please remember to consider this in your assessment of Humans. We all grew up in an environment that told us we were intelligent, from family group authority figures in an accumulative effect of Hitleresque behavior modeling. After a course like that, what else could one think?

- Any organism that is historically adapted to its environment will possibly find it either stressful or beneficial, to encounter a new organism or behavioral paradigm within its own group that it has not encountered before. The organism must get to know a new environmental stressor from scratch, not having had any previous exposure to it. It may be unprepared for the encounter by the lack of a historical normalization, not because of weakness or inferiority but because they had not developed a relationship historically. This is in fact what happened when humans spread out slowly over the Earth.

We came across other organisms that were not adapted to our presence by a historical interaction with each other's ancestors.

- Any new behavior observed in an organism is always a reaction to something in the environment. That has, by its influence over time, and was a necessary precursor to, the observed change, for example an attitude or opinion. You had to have had a Hitler before you could have produced a Hitler Youth. That level of normalized violence does not naturally occur without it being intentionally modeled for them first from an authority perspective. If it was natural or 'normal' for Humans to commit genocide then it would be detectable in nuance in their media and art; it especially would be integrated into their music and poetry, and it isn't found there at all.
- That intellectual organisms that absorb and reflect can choose their behavior independently of the behavior that was historically around them is misguided information. Our intellect is constructed based on the information that we absorbed and practiced through our early sensitive development. As Hitler's Youth proved, we do not get to choose what to adopt, and what not to adopt from the Human environment as far as our intelligence is concerned. However, our unique reflection I consider to be a free-radical within a behavior modeling environment. Not that some will be drastically different from all the others but that each one is unique within the framework of their historical family group's behavior modeling.

The information we're exposed to has to be presented from a completely unbiased perspective, and a totality of information must be available for study. Every viewpoint should be examined and considered, it is the only way that an absorbing and reflecting organism can have an intelligent response.

Aboriginal peoples provide a good example of Organism Theory in action. That being, all we know is what was in our environment, and we only know it the way it was displayed to us.

When Europeans first came to the North and South American Continents, they discovered a branch of their own species that had been separated from them by geography and time. The Colonized peoples that arrived had already been dominated by authority and had existed in that, 'Class' behavior modeled society for many thousands of years.

Like Aboriginal peoples all over the globe who had been historically isolated, how could they have known about the mode of operation of these new people? They therefore could not defend appropriately against them. Had they some level of 'pre-loading', that they had some prior knowledge of the full impact of these new people, the historical outcome would have been much different than it was.

Humans have been suffering historically from a societal behavior modeling disorder that I have named, Behavior Modeling Fascistitis! A now intellectually aware and applied social disorder that's based on the Modeling of Arrogance, and which is protected by the selfish response of arrogance known as Fascism.

Someone who is arrogant has been made to feel as if they really are special or different from the others by their unique incoming and outgoing behavior modeling. Historically, arro-

gance worked to protect that spoiled position by suppressing what is not in their interests, and reinforcing what is in their interests. A normal response considering that the organisms are intellectual and can formulate a simple strategy like this.

Arrogance is where things like, “divine right to rule” had evolved from. It’s another normalizing reinforcement that gives justification and protection for their position of ultimate authority. Initially it was those who claimed to communicate with God(s) who first became arrogant and then behaved entitled. From the earliest Egyptian Pharaohs there was already a fluid integration of the behavior modeling of leaders with that of “The God(s)”. Human sacrifice at this stage of development gave these ‘behavior modeling leaders’ the power of the gods which was to give life and to take it away.

So God, and their earliest arrogant human conduits, were a critically important precursor in the historical development of Kings, and of the mal formed social group that we see today. God’s were exploited as an ultimate hierarchic figure that no one could argue against. This defended and cemented their position over the group’s influence, and eventually led to the 1% having possession of a majority of the group’s production. Themselves answerable only to God, but who is there to carry out Gods Will, he himself says.

Hitler’s Youth believed what was in the environment because it was presented as if it was normal, from their own family group members. It is in this way that Human’s absorb and reflect the environment. Hitler knew how to make available in the environment an accumulation of nuances of the behavior he eventually wanted to see reflected back, which was blind obe-

dience to The State and its leaders. The word “Fuehrer” in German, and Mussolini’s self-proclaimed title “Il Deuce” in Italian means ‘The Leader’ or ‘guide’; just like the nuanced integration of a normalization would be detected in the language of a class oppressed organism.

It seems logical to me, that when Maria M. stopped working with Mussolini and his people, it was because she had discovered only then, exactly what they were doing to the children. Unfortunately, she lived under, and was normalized to, an intellectual level of Arrogant Fascism that was aware of its behavior modeling influence and control. So, any ‘nuances’ in Montessori’s own writings are potentially huge clues, because all that she would be capable of, is blended nuances. It’s noted quite a few times in her books and biographies; that one could survive quite well, if you didn’t say, or write, anything that was specifically against The State.



If you were educated from an arrogant perspective you are actually not equally as arrogant, you would only be ignorant of another normalized perspective. Much like Hitler's accumulatively conditioned Youth were blind to what had influenced their attitude, and therefore could see nothing wrong with it because it was always modeled as normal.

THE HUMAN BEHAVIORAL DISPLAY OF ARROGANCE

Humans have been refining the tools that they're equipped with for many millions of years through an accumulative effect of integration with their environment. So it's no surprise that over time we've become more adept at applying ourselves to the environment, including our own family group behavior environment.

The level of language that we use today is such an efficient and high rate of transfer, of highly nuanced information; considering that we are organisms that absorb and reflect the environment. Language, a learned and practiced ability, is a huge environmental stressor because language is a nuanced form of behaviorally displaying. It's impact measured by its accumulating influence over time.

While agriculture was evolving so to was the idea of Gods or Spirits etc. It was simply a matter of time until someone began saying that they talked to the Gods, or that the God(s) spoke through them in some way. For an individual to say that they communicate with God(s) very likely could have originally

been a response to immediate environmental stressors. For example: drought, famine, disease, flood, death of family members, unusual weather phenomena, uncommon celestial events, etc. This would have then continued a step by step accumulating process that grew into what we see today. There was never any intention by any one individual especially at the earliest stages of claiming that you act as a conduit of God(s).

In terms of the applied experimental psychology that Hitler knew, it's only one step in a proceeding course of integration from saying that, "There are Gods" to, "I talk to God(s)". It likely offered people relief from stress as it does today.

Applying Organism Theory to these early behavior modelers, they were not prepared for what would happen accumulatively because Humans had never experienced this behavior modeling before. Also, someone claiming to talk to/for God, for the first time, would have received a lot of attention, and could have attracted a large number of people not directly family members to the same place for the first time in history.

And because talking to or for God(s) was previously unknown in the environment, our brain wants to integrate with it. We were drawn to integrate with it like we are to everything else in the environment, so that we have experience and knowledge of it. Integration is the normal learning methodology of humans.

In an accumulative effect, being rewarded and looked up to normalizes you to your position of receiving those special recognitions. Imagine everyone bowing upon your presence, seeking your preferred audience, showering you with gifts and even sex, having an accumulating effect over time? I believe that is the

core of the sickness that many movie stars develop, all too often resulting in their early death.

Arrogant leaders have been protecting their normalized positions over evolutionary time, and some have known the science of it now for over one hundred years. That's why American Presidents, regardless if they are Black, White, or even if they are female, will faithfully continue to reflect the spoiled minority class interests. It's their normal which was a prerequisite before their support for presidential candidate. Only those who clearly reflect the boundaries of the normalization are promoted into the upper echelons of an oppressive class society. They promote the most normalized individuals purposefully as a broadcasted model of normal behavior just like Hitler did.

When you're 'The Leader', or you've been built-up over time by The Media, other humans are now actively behavior modeling 'up' to you. Their words may seem tailored to impress you in a variety of nuanced language. This is the very fast growing seed of arrogance that Humans are particularly prone to experience after a normalization upon their first graduation into authority.

Human family group authority perspectives over an evolutionary time scale captured the products of Human labor because it was given to them originally by the people in innocence, and out of innate obedience. In turn leaders modeled that they deserved it because they quickly thought they really did, and then started to promote that in the social conversation.

The early behavior modeler's of God(s) constructed the present day Human social structure by their nuanced contributions. Eventually using God(s) as an ultimate hierarchic figure to be

looked up to as an example of all that is good, to be obeyed and followed, not argued against or questioned.

Individuals claiming to be conduits for God(s) began modeling the behavior of their local populations in the groups that they occurred in. Protecting their position with the behavioral display of arrogance from very early on, as if there could never be any question of their authority or right to rule. This began the intellectually applied influence of what had previously been naturally accumulating Human group dynamic behavior modeling.

This influence created a small group or class that exists within a larger population but which display's differently to others who are not members of that select minority 'in-group-within-the-group'. When you become part of that in-group the conversation will be peppered with nuances of discrimination about the others in the group.

This behavioral dynamic has an historical trend of comparing 'The Others' to perceived repulsive and feared creatures like Snakes, Rats, and Cockroaches, Ants etc. All creatures that they already fear and would kill without a second thought if they were even just perceived as invading our space. So those behavior modelers of Pogrom's didn't even need to say "kill these people over here"; they only needed to provide an accumulation of nuances leading up to comparing them with those reviled creatures.

This agitates the population against those who have been casted down because it had been displayed to them in behavior modeling language from a trusted authority. Like Hitler's 'innocent' Youth, our minds have been played with historically by our own leadership, integrated into us within the boundaries of our own group's behavior modeling. Human information is lit-

erally absorbed and reflected, reverberating many times over between the members of the group.

Understanding Human behavior modeling in this way it is possible to think of Pogroms and other instances of Human genocide as being agitated by a family group authority representative of some standing to “raise passions”. To intentionally send an emissary to, “raise passions” is the equivalent of the integration and normalization pattern that Hitler followed, but without Hitler’s educational awareness and time.

When we hear in the media that someone has used the ‘N’ word again, in public or on a recording; they are most likely reflecting the behavior modeling that is in their normal environment in an accumulation of exposures. After these incidences they are now more aware of the potential for release of bad publicity, and in the future will be more selective in what they reflect around certain groups and individuals. This learned ‘tactical behavior’ protects a group dynamic circle from detection by the other. Private Men’s Clubs as well as College and University associated memberships, Police, Military, etc., can all be considered places where there exists a closed-group dynamic among the members. Meaning that there are conversations they carry on with each other in private that they do not engage in with individuals that they know are not part of that in-group.

Humans in groups with historically arrogant behavior models have been devalued by the group’s leadership over time. Attacking their worth and promoting their own so that the portion the workers received back from their production could be less than what they had physically produced. Hoarding as much as possible, directing it towards supporting their private inter-

ests which is sadly and simply to meet the demands of their own arrogance! Surplus goods, and being in charge of it is the origin of power, because you can direct it where you decide, thereby influencing people in your interests, portraying yourself and your close associates always in a good light, ignoring or hiding the bad.

Modeling arrogance is how a lot of the gestures we use like bowing down, kneeling, bestowed titles, kissing the hand or ring, saying sir etc. got started. These are all displays of behavior modeling ‘up’ to another individual, they also display your submissiveness simultaneously. More examples of nuanced behavior modeling such as, aggressively defending their decisions, too many compliments or too much impressive subject matter, a downcast model of themselves or self-humiliation in the presence of recognized authority, to name a few.

The first stammering’s of class division began long ago when the hierarchical model of arrogance was displayed to us from within our own family group. From the beginnings of the scaling up of agricultural farming until approximately 4000 BC there is a maturation period when behavior modeler’s who represented God, took possession of their population’s production. Receiving goods on behalf of the group, and then meting it out as if they almost had none.

Over time, behavior modelers began directing the population’s labor to things like Pyramids and Temples for their own glorification. Behavior Modeling Arrogance, Religion, and Surplus-Value are what form the core of the Class and competitive Profit system that is now our family group’s ‘normal’ behavior.

It always would have seemed normal but it’s now a direction

that more people are realizing is not in our interests to maintain. Based on the exponential growth function it is unquestionably unsustainable to support a constantly expanding economy without serious consequences. We are acting in a very similar way as a Cell does when it turns cancerous. It has become corrupted in some way and is growing uncontrollably, choking life, and spreading it to other cells without any consideration.

Humans are prone to arrogance but are not arrogant by nature, we are arrogant as a response to our environment which modeled it to us in the first place. So it then becomes a question of what the nuanced pieces are that constitute the totality of behavior modeling in our brains. Hitler's Youth thought of in this way, had that accumulation of nuanced behavior modeling in their environment, it was necessarily pre-requisite to their adult behavior.

Writer Upton Sinclair published a book called *The Goose-Step* in 1922-23. It is one of six books in his "Dead Hand" series. In it he writes of the relationship between American educational institutions, and the influence of capitalist ideology in those institutions, including the influence of religion as part of that system. In *The Goose-Step* p.18 he writes, "Our educational system is not a public service, but an instrument of special privilege; its purpose is not to further the welfare of mankind, but merely to keep America capitalist. To establish this thesis is the purpose of *The Goose-step*."

In reference to WWI and the fight against German autocracy he states on the same page, "It was not merely a physical thing, the drilling of a whole population for the aggrandizement of a military cast; it was a spiritual thing, a regimen of autocratic

dogmatism. The best expression of it upon which I have come in my readings is that of Johann Gottlieb Fichte, Prussian philosopher and apostle of Nationalism; I quote two sentences, from a long discourse: “To compel men to a state of right, to put them under the yolk of right by force, is not only the right but the sacred duty of every man who has the knowledge and the power... He is the master, armed with compulsion and appointed by God.” ...what we did, when we thought we were banishing the Goose-Step from the world, was to bring it to our own land, and put ourselves under its sway – our thinking, and, more dreadful yet, the teaching of our younger generation.”

Another thing that Sinclair points out in *The Goose Step* is that the presidents of many of the most prominent Universities of his era had all studied in Germany. He stated on p.115 “... every one of them learned the Goose-step under the Kaiser!” Sinclair implies by the title of the book that students in American Universities and Colleges were being trained to think in unison like German students were.

The Palmer Raids against political radicals occurred in 1919-20, while patriotic and union hating organizations like The Better America Federation worked to spread their behavior modeling. It looks like the application of integration and normalization to me.

What do Hitler’s Youth, despised Teachers, Donald Trump, Pedophile Priests, and Police Officers that are too easy to pull the trigger on some and not on others, all have in common? A normalization to arrogance of course! Constructed by the absorbed behavior modeling in their historical environment. All are innocent of their arrogance because it was modeled to them

as normal in a Hitleresque fashion, whether it was intentionally applied or not.

Teachers of the old regime have been educated themselves under the same kind of ‘led to education’ that they’ve now been educated to teach in. They are not being taught in their training a totality of knowledge about education, and only learn that narrowed perspective of what amounts to behavior modeling from an arrogant perspective.

For over a hundred years now it’s been common knowledge among people who study a broad range of educational theory to arrive at the conclusion that the current education system functions the way it does intentionally. Because better knowledge is known by Man collectively, it should have been applied over all, and it’s not even on the horizon. The educational result of this ‘system’ is then a corruption of what was historically ‘normal’ for Humans. An education like this can be labeled under experimental psychology as, “behavior modeling from an authority perspective with an accumulating effect.”

What is common among the members of these examples is the behavior that their arrogance seems to justify. Teachers rule their classrooms with impunity because they alone are granted the authority to grade, reward and punish the students who they perceive as needing their controlled teachings. In my opinion, knowing what Hitler knew, I believe that children’s teachers are one of the main sources of bullying behavior modeling that is in their environment in an accumulative effect.

Donald Trump is a classic example of someone normalized to arrogance. He reflects the historically closed group dynamic behavior modeling ‘as normal’. He doesn’t even seem to be

aware that many things that he says are so inappropriate, and were words and statements that he should have reserved for his close associates.

He has been permitted to say much more than any of us would have been able to, and still be constantly talked about by the media. Thereby reflecting all of his negative, but now somehow acceptable discriminatory rhetoric! It's because this thing we call 'The System', supports and rewards arrogance in all of the nuances that it can.

The worst thing is that Donald only wants to be the president to fuel his arrogance even more than it already is. He knows nothing about the office of President other than he wants to be the leader, because he thinks he can win! He is uninformed on many common subjects that he should know much better for a presidential candidate. He's insulted other States, women, disabled peoples, journalists etc.

Something that recently preceded his run for political office was his TV show *The Apprentice*. The later running series had him firing publicly known super-star figures, like famous and infamous sports stars and TV personalities. Each accumulating nuance of behavior modeling in one's environment, has at least in nuance, contributed to present day behavioral attitudes.

It is glaringly obvious by his language that Mr. Trump thinks very highly of himself. For a man like this to reach the position of President, an exponential growth in arrogance is only to be expected. And he is already descending into a behavior modeled form, because he will clean up his language over time, something that we are all seeing happen right in front of us. The underlying attitudes that we saw early on will

still exist, but, we will not hear it publicly anymore. It will only be detectable in the decisions that he makes, and by the kinds of things that he supports.

Pedophile Priests are a good example of arrogance that makes you wonder what is happening in the brain when criminal acts like these are being committed. Priests as we have been taught to perceive them, should be incapable by Trade of such hurtful acts. The poison of Arrogance is that it impairs or overrides rational decision making, putting your own importance above the others. When they think nobody is watching, their behavior reveals an accumulation of aggravating factors.

My view on predator priests is that they are kind of predisposed by their job towards sexual dysfunction. Firstly most of the world's Religions practice male circumcision. Being circumcised inhibits masturbation from what was historically normal for Humans to do. The shorter that you've been 'cropped', the worse off you will be, and if you don't have a lubricant when the mood strikes, then you're not relieving yourself when you naturally want to.

An accumulation of unmet needs like this can lead to unpredictable outbursts of violent behavior, similar to a small child's tantrum but on an adult scale. I suspect that sexual development in adolescence is a 'sensitive period' that is not that much different from earlier periods of sensitivity, so the same general rules about sensitive periods should apply. Such as the damage that is caused by interfering with spontaneous behavior, and which in regards to sexuality, Human culture normalizes. It only takes a few nuances to influence future behavioral outcomes when one is in a sensitive state of development.

From a historical background there is already a lot working to support corrupted sexual behavior in males generally. Religious representatives though are thought of as “Men of God”, and it seems their devotion and vows of chastity have replaced any sexual needs that they might have had, or may have in the future.

When the leadership of the offender’s affiliation minimizes the acts by the lenient decisions they make over the crimes, it models behavior to that Priest, and to the others. Un-coincidentally, religious group behavior in matters such as this, is just like the Police’s behavior modeling, when it comes to the improprieties of their own members.

The Police it seems are trained in arrogance, then given the badge of an official and a gun to wield it. I myself have been bullied by the Police 3 or 4 times in my life, and one of those times I was bullied by Police for catching them bullying someone! Which they were totally guilty of, of course!

At a local event I witnessed 3 officers use intimidation tactics and threats against a middle aged man who was only guilty of having a beard and wearing a Harley Davidson adorned T-shirt. When they heard my exasperation they turned their attention to me, standing 6 inches in front and on each side of me, like I had just witnessed them do. A stance that by itself is an aggressive intimidation because they invade your personal comfort zone. They were quickly averted away from me after I pointed out their discriminatory behavior to them, with a smile and a nod from their recent victim.

When thinking about Police behavior it is important to remember that Police violence is nothing new, it’s just recorded

more often because many of us carry the capacity to film most of the time. Police are protected by a brotherhood that models an approval of their behavior because their punishment most often pales in comparison to their crime.

That's why many officers who've killed unarmed civilians will get a paid leave of absence, until most are eventually reinstated, and or transferred to a different city, instead of other things that are more like actual punishments. But of course then that would be like admitting that a crime had occurred, and they're not going to do that!

Concerning the often unprovoked and elevated number of killings of African Americans by police, in certain regions more than in others. Other than the chronic stress that the Police and African Americans are already under. Those Police departments, or a group of individuals integrated within it, are guilty of participating in a closed group dynamic of discriminatory behavior modeling, particularly against African Americans.

We know this without questioning them in person, because of the ease that they will shoot at African American persons, as opposed to individuals from other groups whom they are not shooting as much.



Intelligence?
Or education?

PSYCHOLOGICALLY CAGED ANIMAL SYNDROME

On Class, Education, and the Media

What I'm talking about is the present day human condition. Because we're born and then absorb everything that exists, it's all 'normal' to us. So things like going to school and "Working for a living", we grow up looking forward to. We were even primed for it when asked as Children, "What, or Who, do you want to be when you grow up?" There is no question or choice in these matters because they are historically presented 'as normal', and the question of their existence is not discussed beyond supporting the old status quo. All of it, in pieces, are 'nuances' of our collective social conditioning that the existing population was already conditioned to by the time we were born.

Why are we producing so much, and who are we producing it for? What part does Class play in the structure of my intimate family group's structure? Where was my 'whole' family group when I needed their love and teachings as I developed? Why does our activity produce and spread so much, and so many en-

vironmental contaminants? These questions are not ours to speak of intellectually freely because we are the exact same creature as one of Hitler's Youth, and we can only think within the normalized patterns that we absorbed.

In terms of the applied social conditioning that Hitler learned, among the aligned States, their populations are now at least 3 Human generations deep into State Nationalism, Capitalism, Leadership, Class, and Religious normalization through Hitleresque integration. There had already existed a historically applied intent before that based on a Human Fascist response. Most of us living now probably wouldn't recognize the truth if we saw it. And I know that we couldn't see it, before having read this book of course, because I know that what Hitler did is saturated into all of the world's 'major power' States. It assaults our brains every day from family group authority perspectives on impressive Hi-Definition media, that was designed from its inception to 'impress' our absorbent, electro-chemical, and behavior modeling brains. Something that if we were all acutely aware of, we wouldn't have tolerated, or so we believe.

We are so far into it that you're probably thinking that what I'm saying seems to be quit a ridiculous concept. That we are not intelligent is the antithesis of what has been historically normal to you. Then by the same standard could any one of Hitler's Youth been expected to feel compassion so easily for the same ones that their attitude had been normalized against? It's fairly common knowledge that many of Hitler's generation had an especially, 'stubborn hold' on their racialized 'feelings' particularly against Africans. This was due to the way that it was integrated into them, and that likely in-

cluded nuanced displays of disgust or contempt which were part of a larger behavioral display of language.

Hiding what Hitler and Mussolini knew prevented us from recognizing it in our environment. Today's generation is a reflection of those 'historically influenced' conditions, under which each generation is normalized to. A Human family group based on a perception of class is not how we always lived, and therefore quite predictably we were not evolutionarily prepared for its arrival. Class society is symptomatic of a corruption within what was originally a fluid family group of organisms existing as part of a whole living system that is based on absorption and reflection, not competition.

Class is the historical expression of arrogance, and it could not have existed in the way it does now before a succession of steps in the use of language had occurred. Always remember to apply in your thinking that it was always Human nature to absorb and reflect through and over an historical development. Human behavior is not in reality a choice based on their species intelligence, rather it's the behavior of an organism that absorbs and reflects its environment uniquely.

We're now living under a great amount of stress because we have lost the intimacy and normalcy of living in an environmentally 'equilibrated' group, which was our normal for the duration of our evolution up to the appearance of arrogance which coincides with the appearance of Fascism. So any path forward will be with a focus on a slow and gradual integration, which although in human terms is incredibly fast because we absorb and reflect between each other at a very fast and efficient rate.

The life a Human lives now is intellectually influenced by an historical progression of suppression. Mass exposure to human interest technology, or class emancipation, is suppressed in an accumulative effect over evolutionary time because each ‘nuance’ threatened an established arrogant hierarchy that can easily ‘behavior model’ against those ‘nuances’ as they appear over time.

The arrogant class consider it their cultural ‘normal’ to oppress and exploit those without behavior modeling capital. It seems obvious that arrogance forms the foundation of their school of thought; a school that knows to infect their own children in the same ‘normalized’ way as Hitler’s Youth were. It’s why the world seems so insane these days. They’re practicing and promoting arrogance as ‘Hitleresque normal’!

I want to clearly state here that I don’t think that every leader becomes arrogant by their position but that a high percentage do; and that our species is highly susceptible to arrogance accompanied by a selfish interested fascist behavioral strategy. I believe that modern day Capitalism is structured from the Human behavioral display of arrogance, as was the case with Religion, ‘The Father’, or precursor of Capitalism.

States that are aware of their behavior modeling influence can intentionally model attitudes in the decisions that they make, historically assuming their population’s behavior. The influence of arrogant authority affects the population’s behavior over time, much, much, more than we realize because we have always been absorbing and reflecting our environment throughout our history. We are not uniquely and independently intelligent to know that a Human promoted into an authority position is highly likely to display arrogance in the nuances of

their decisions. And our ‘behavior modeled education’ has made us submissive to authority, because our educational environment was always full of those normalizing nuances.

Religion is used to maintain the status quo, and examining it reveals the awesome power of behavior modeling from an authority perspective over evolutionary time. Religion and its symbols are used to associate individuals to a specific group of people, as well as is circumcision of males. Religion is exploited by their own hierarchy for money, sex and policy making power, and also by those wealthy enough to influence politics, elections, and even specific information on matters that are in their interests.

Organized Religions can potentially be used like a neural pathway for integrating ideology, by infusing an accumulation of nuances into religious populations. A signal can be put into motion that can be absorbed and reflected down through any organized hierarchy of authority, and into the minds of millions of the devoted, all modeled from a family group authority perspective! Religion was the original arrogant hierarchy that preceded the position of King. And by the fascist nature of arrogant leadership, condition innocent, fluid organisms over evolutionary time.

So in that way leaders had already mastered an historical ‘integration’ of their interests, simply by always displaying a selfish protectionism of their position. Usually they appear as if they are the victim’s themselves, it’s as if “They who commune with God?...could have done anything wrong is impossible!” Appearing as pitiful and meek in public fits the established method of operation of most religious leaders.

You might not have ever heard this but did you ever hear that the 1970's English rock music group Black Sabbath was Satanic? Or you may have heard that "listening to Black Sabbath will make you Satanic!" I remember hearing something like that for the first time in the early 80's. I noticed as I reflected on it that it would usually come up in conversation after there was something to 'prompt' the subject, like the name of Black Sabbath. Perhaps I remember only because it was an uncommon thing to hear stated specifically about anybody.

I never heard statements like that made about any other groups of the era, despite some other hard-rock group's album covers and lyrics, having more Satanic-like, or Evil tendencies than Black Sabbath's lyrics did. Alice Cooper is a good example of another group at the same time who were acting out murder scenes on stage, but we didn't hear as much fear about them.

Sabbath's name, their concert displays, and lyrics in truth boldly mocks religion as opposed to supporting a Satanist attitude. The "Big black shape with eyes of fire" is more likely a metaphor for a priest filling you with images of hell-fire and eternal damnation, really scary things that we now fear, making us obedient. The lyrics of Black Sabbath reflected the tumultuous times that they lived in, and include many religious, political, and socio-economic topics such as Drug use and War for example. There is even a recurring theme of a poverty of intellect, and that we live under oppression.

In fact their lyrics are sorely lacking in promoting any Satanic content at all, and particularly when you compare it to the volume of good, God references in their songs right from the start. Their lyrics are actually quite rich in nuances of didactic

information that when added together actually has something to tell us. They also did believe in God, including on their 1971 Album on a song called After Forever, “God is the only way to love.” They never divulged such a statement in favor of Satan.

It is very likely that a majority of followers heard their church’s bias, in private or in sermon, of what is really a fascist strategy of top-down nuanced mind control over their group dynamic behavior modeling. Always coloring the perceived ‘others’ in a negative light in order to distance you from exploring that topic further, and perhaps developing an independent opinion. The end result of hearing that Black Sabbath was Satanic meant that fewer individuals listened to it, and so did not hear nuances of another opinion about their religion.

Something else worth noting about Black Sabbath’s reputation for being Satanic is that a book had been published called *The Satanic Bible*, written by Anton Lavey in 1969, Black Sabbath’s debut year as well. The Content of this book actually contains the core principles of Satanism, and the related information like how to do satanic rituals etc.

More books of this nature followed from the same writer in the early 70’s. There is not even one nuance of a reference to this book, its principles, or to its writer in any Black Sabbath work. So I find it extremely unusual, and you may find it a little funny also, that many people heard “Listening to Black Sabbath will make you Satanic!” instead of hearing these words spoken instead, “Don’t read the *Satanic Bible*. It will make you Satanic!” If you were to read through the lyrics on their first ten years of albums you would find many

reasons, and some very specific ones, that both Religion and Capitalism had that would inspire them to seek to suppress their lyrics.

The impact of what you might think are benign events like this, is that your behavior is no longer reflected from the ‘totality’ of your environment. You are no longer hearing a totality of the conversations going on in your whole extended family group’s behavior modeling. Your behavioral reflection towards your environment will reveal that influence because we always have to apply an accumulation of what the historically absorbed impressions were, to approximate what a person now is, and what they believe that their ‘beliefs’ are.

Witnessed behavior modeling can implant a bias that can influence humans in an accumulative effect of absorbed and reflected behavior modeling. This ultimately influences your behavioral response to your environment, and assists in nuanced part of forming your intellectual reflection as if everything that was witnessed is normal.

Caged Animal Syndrome refers to the corrupted behaviors displayed by animals kept in stressful, and or physically restricted circumstances for a time period of significant length. Thin Sow Syndrome is a good example of caged animal syndrome. It is the result suffered by pregnant Cows and Pigs in Human production facilities. The Sow’s are kept immobile in gestation crates for the duration of their pregnancy. This prevents them from even turning around in place, as well as most other normal behaviors. After these periods sows are overly active, aggressive and eat very little, resulting in declining health and often ending in death.

Psychologically caged animal syndrome refers to a restriction or change from what is usually normal in the development or life cycle of an intellectual organism that can absorb and reflect communication at a high rate of speed. Even when no physical restriction is apparent, the historically influenced social norms of intellectually communicating organisms can result in the appearance of stress related injuries and abnormal behaviors, similar in nature to the damage suffered by caged animals but psychologically.

In Humans anything that includes even nuances of self-harm such as addiction for example, could be generally categorized under Psychologically Caged Animal Syndrome. The damage they suffer from was inflicted on them in their early childhood development and throughout their lives 'as normal'.

Using commonly available information I studied the numbers on the global suicide rate of Humans; for something to use as a base-line to judge the depth of our societal Psychologically Caged Animal Syndrome. What is generally estimated is that in every 40 seconds that passes there is 1 suicide on average globally. For every successful suicide it is estimated that there are 20 attempted suicides that have occurred. That is equal to 1 attempt at suicide every 2 seconds world-wide.

Using statistics on major depression there is approximately 300 000 000 or 4.3 percent of the global population classified as seriously depressed. Using those numbers, on any given day there is potentially 10 000 people that are contemplating attempting suicide for every 1 attempted suicide; that's 10,000 different people every 2 seconds that are already in a sensitive state to contemplate attempting suicide.

All of this is caused from our own historically warped and perverted family group dynamic paradigm which is where we find ourselves to be stuck now. The only other organisms that intentionally end their own lives are just a few types of bacteria whom cannot even 'feel' depressed!

Man's stress is brought upon him by his own family group behavior, which each new individual will have absorbed from, ensuring that it is reflected onto the next generation, kind of like a transmitter, or maybe in our case acting like a mirror-miter for survivability, good or bad, right or wrong.

When Humans are shocked by violent or stressful situations involving other Humans, the brain responds by activating the sympathetic branch of our nervous system. Components of Hormone's are released into the blood stream during times of observed stress. For example, when on your screen someone gets their head cut off, or if you have ever watched the myriad of intensely agitated cooking competition shows on Television. And I am almost certain that even Television Soap Opera's fall into this stress response category as well.

The popularity of 'Reality TV' is likely centered on this brain-drug-stress response, because the structure of these programs encourages conditions which agitates the social relations between cast members, affecting the viewer's brain to a high degree. Reality TV dating shows for example, pits as many as 25 people against 1 of the opposite sex, in what is basically a dating competition to win the approval of one person. It is creating a platform for aggravating what are already stressful social interactions embedded in its design. Even the notifications we get on our devices causes releases of

Dopamine, it's a nuanced 'high' which draws us unknowingly into addictive behaviors.

I don't claim to know the range or minimum threshold of these neurological responses but; I suspect that because everything else is so nuanced in our lives that these processes are highly nuanced as well. So we wouldn't necessarily 'feel' as if anything had happened when something had. Our media is exploiting the Human body's neurological stress response system, as well as our normal emotional and reward system responses. And it is all 'brain-drug-addicting', and so nuanced that we don't realize that it's even happening.

Chronically being under Stress is a huge determining factor for overall health and wellness. Problems can include hypertension and an increased risk of cardiovascular disease. Prolonged stress can also cause problems with memory, and can increase aggressive behavior. Chronic stress must also be a predetermining factor in most suicides, and it definitely is a factor in suicidal bombings and mass shootings.

Video games which are predominately reward oriented, are engineered to exploit our brain's chemical response systems. This wins capitalism a repeat customer, and not only dumbs down the player but behavior models killing others who speak a different language, and with military type weapons to boot! Kind of similar to a scaled down version of a Training Simulator isn't it? You can't say that it's not a nuance that further reinforces War 'as normal'. Hitler would have been deeply impressed that this level of conditioning was going on right out in the open, 'as normal'.

Very similar to what we see on TV generally. My impression, knowing what Hitler knew, is that they are choosing speakers

purposefully for their normalization. Because they want to broadcast a normalization, the guests are pre-screened and carefully selected to reflect behavior ‘as normal’, from a family group authority perspective.

So I say to any of you who may think that we live in, ‘modern times’, or ‘revolutionary times’, you are reflecting from the totality of your unique experience, and like a majority of people are likely more prepared for a Zombie Apocalypse because that’s what was in your environment! So those other things that were not there are unachievable because they are actually unknown to you.

As a social observer I exposed myself to various media, intentionally searching through content for nuances of ‘Hitleresque’ behavior modeling. Bullying for example is prevalent in some children’s TV programming. Outright bullying and discrimination is the norm in most adult programming, it’s usually what gets the laugh! Competition, always leading to one winner who gets special recognition and the biggest reward, is now the main theme in Television programming. I’ve heard age, sex, and ethnic group discrimination on my local radio stations. There is an accumulation of discriminative bullying about, appearance, intelligence, female, and age discrimination, as well as ethnic group stereotyping integrated into popular TV shows ‘as normal’.

Most talk shows have integrated advertising into the show itself; as evidenced by the fact that their guests almost always have something coming out soon. Also, witnessing an audience cheering over gifts they are receiving for free, probably acts like an aphrodisiac on the viewer because our brain is impressed and

is reacting to what's in the environment. And naturally we want to reflect our environment.

Reality TV to, behavior models arrogance from one who is in authority and who subjects the participants to stressful situations, which the watchers brains are responding to by releasing nuances of drug-like Hormones. I shouldn't even have to mention the sexualization of women in the media, that's everywhere, 'as normal'.

Each Country's influenced mass media promotes in an accumulation of nuances (including the nuances that are not there) the subjugation of your mind. It is always looking for and adding nuances of behavior modeling which defines the parameters within which you can think and reason. This is why historically, the subjugated class has been powerless to change, 'The System' and this is why humans make the decisions that they make. Just like Hitler's trained Youth who only projected what was normal to them; we are projecting the arrogance that was modeled to us for over thousands of years from authority 'as normal'.

Even the word Anthropocene in our environment is a huge Hitleresque normalizing nuance that resigns us to not act to change the Human world. Thinking about influencing our epoch in time is beyond our capacity now because they've told us what epoch we're in, 'as normal', and it didn't include any good news or specific instructions for you to do something different. Influencing 'Humanity' was a task already commandeered by the arrogant, who established Human 'class' in the first place long, long ago, and is not a subject for today's State to teach to working class peoples whom they feel 'normal' or

‘Rite’ to exploit and oppress. By this understanding the Anthropocene is only representative of the social cancer our species developed, and does not truly embody a full understanding of natural or normal Human behavior.

Something very interesting that I saw that struck a chord with me were some American films from 1939. One movie called *Babes In Arms* which stated in a musical part, “we got no Goose-Step”, quite a specific nuance impression at that time. It was also patently untrue because we know from *The-Goose-Step Book* that it was brought home after WWI. Another Movie that I cannot recall the name of but it was also from 1939, portrayed Military comradery as if it was a patient, understanding, supportive and forgiving brotherhood! Ha! Misleading information by behavioral modeling.

Many States and military strategists learned from experience in WWI to exacerbate racialized feelings in the ranks of their soldiers to improve their efficiency in battle. In quite a few instances during the war, examples of friendly relations were quite common, a problem as far as their leadership is concerned. The response of military strategists was to instill fear and hatred of ‘The Enemy’ and to employ attacks in a ‘wave’ or sudden charge pattern, and began avoiding circumstances where opposing front lines could develop a friendly normalization.

In documentary programs about WWII some American soldiers mentioned that the military showed them numerous propaganda films that were about the enemy. This is an example of the same kind of exacerbation and elevation of behavior modeling that is responsible for Pogrom’s and all other acts of Genocide!

You could also claim that this conditioning helps to keep them alive and it's for their own survival; so that they don't hesitate to shoot when the time comes. What it is though is the same thing as Hitler did. They've now been influenced towards a desired attitude 'as normal'. That bias that Soldiers learned from the military were taken home with them where it was reflected onto growing children and other adults, exponentially spreading it like a social disease.

The State historically has been modeling our behavior, now they are actively teaching bias to Soldiers, and in all likelihood, The Police as well. We all are under the historical spell of 'The Fuehrer' in our own unique way, no wonder we can't see it, it's all normal, but it's always been under a Fascist attitude.

There is talking going on about all the bad things that are happening in the world, and it's frustrating to see that the limits or boundaries of all that talk grounding us to where we are. In fact the opposite of the didacticism that we need is present in a supersaturated accumulation. The behavior modeling transmuted to us can all be categorized generally as a normalization to class, when looking at a broad spectrum of media's.

As we can see on our Television and computer screens, the environment is there for us to extract from, 'as normal', and that sometimes you might not even make that much money in the end. The harms left behind are always minimized, and those harms are not well understood when you consider that each nuance harm is another small step of a larger accumulation. Life-forms depend on the environment maintaining the historically established balance that it was normalized to.

We are told that we live this way because evolution carried us here, and you have to admit that you can't change the past. But based on what Hitler knew, changing our behavior is only impossible because the existing bias in our environment that supports the status quo has normalized us, in person and over an historical accumulation from an authority perspective that there are no other options. Because you could literally be thinking anything! Including a reflection of love and respect, if it had been modeled in an accumulation in your environment as you developed.

It is possible then for almost any Human to be like one of Hitler's Youth, or like a savage with no language or discernable intellect, or perhaps like one of Maria Montessori's graduate students who had developed all on their own a charming personality. Then it is possible for Humans to be normalized under any conditions, regardless of how toxic or healthy they are. Today we are reflecting arrogance as normal behavior because it was historically modeled to us from our own family group authority figures. Whom we initially trusted because they were from our own family, and we also see that everyone else is trusting them. For example, by providing representation for you by something as simple as mentioning your name during a large media event, or in a song perhaps. Every exposure must be thought of as a nuance that is leading to a normalization. Similar also to the way that big budget films are often exploited to model class relations 'as normal'.

A good thing that you might not expect to learn about this knowledge, is that when you are taught from the perspective of arrogance, you are not truly arrogant. You would only be ignorant

of another normalized perspective, and are not innately arrogant, only reflecting the Human environment in its current form.

It is impossible for an organism to develop an intuition to question its own family group behavior as it goes through its early development. The behavior slate is empty at birth, an active psychic drive propels us toward exercising with the whole environment, in stages of sensitivity, over the course of our development. And because the reflection of that development depends wholly on what material was there to be absorbed.

What this means is that the Capitalists that inherited, “What Hitler knew?”, and that reign above our democratically elected government representatives, is behavior modeling to them, knowing the applied sciences in regards to integration and normalization of their interests. We should think of Government lobbyists as behavior modeling their interests, with the interests and money of applied Capital behind them.

Our elected leaders have gone through an extended course of behavior modeled education, and cannot reflect anything else because of their ignorance, not true arrogance. Such a waste because it is natural for humans to volunteer themselves to the occupations that they see their family group members doing. As Maria Montessori’s experimental classroom demonstrated very clearly well over 100 years ago.

Our species is being integrated behavioral modeling of specific information, broadcasted from an authority perspective with exactly the same knowledge that Hitler learned from Mussolini behind it. These nuances are present in a familiar pattern throughout most media’s, each type of media and its members, behavior modeling by nuance in its own unique way.

We were born into a world with a historically developed arrogant hierarchy. Who, along with Religion have been applying the equivalent of integration and normalization all along because the jealous behavioral response known as ‘Fascism’ was there just a moment after the first sign that arrogance was. Since historically accumulating language, up to and including “I communicate with God(s) in some way”, and large scale agricultural farming produced surpluses not experienced before.

Now there is a school of thought based on Human behavior modeling of arrogance somewhere. That same school of influence knows how to apply integration and normalization to Human behavior modeling in real-time, and over evolutionary time. I think they are also teaching arrogance as a rite to other leaders! Who eventually get to the point where they burn themselves out because their arrogance has gone off of the reasonable scale and they sort of implode over time. Modeling arrogance to the extreme degree is what maintained the real positions of power that reigned over humanity over time.

Unfortunately we are not born with the intelligence or awareness to question our family group’s behavior as we develop. But that doesn’t mean that we’re incapable of an intelligent response. We only have to have learned from a totality of our Human environment, and all of that information cannot be transmuted with even a nuance of bias, because that is how we will learn it as if that were normal. And you will only have ever learned what our species knows collectively up to your point in history.

In our high school history classes we sometimes read just 1 or 2 ‘groomed’ books on periods of time, and of subjects and of peoples. To ‘know’ anything though requires a totality of

knowledge to perceive it from an exact vantage point. This can only be acquired by studying from every available source, comparing all the biases against each other to learn the balanced truth. This enables a solid 3 dimensional model of concrete understanding to form in your mind, enabling, and what must be a necessary precursor to, an intelligent response.

Studying from one source in regards to School, Library, Country, or group dynamic, limits your perception of things to that source; ultimately directly affecting how and what we apply ourselves to over our lifetime. That limitation causes a high percentage of us to not explore any negatively behavior modeled concepts; thus protecting the established hierarchy's position because it's now taught as-normal. The population as a whole resists less and less over time, or acts from an already prone position.

In a family group of intellectual organisms that absorb and reflect the environment at a high rate of speed and efficiency, you don't have to reach a large percentage of the population to have behavior modeling reflected in an exponential growth pattern throughout the population.

Reflecting On Recent Events

I am grateful to have the opportunity to include in my book a few things that I want to say about the recent and increasing wave of terror attacks happening all around the world. The attacks in Belgium on March 22, 2016 recently occurred, it compelled me to make some comments about it.

Individuals who are in a prerequisite state of becoming a suicide bomber or public place shooter have been under social conditions of chronic stress likely throughout their lifetime. It is

unlikely that someone who had developed in an atmosphere of love and support would attack that support group, or any other that they were not previously normalized against.

If you've had contempt aimed at other groups modeled in front of you in early childhood, you are then as an adult exponentially more likely to be drawn into other groups which mirror those sentiments because those early formed sentiments are now an indicator of an intimate kinship recognition.

For example, Donald Trump in his accumulative effect of nuance impressions of discrimination has established an intimate kinship group recognition with other individuals who are mirroring behavior modeling patterns that they recognize as family. I believe that's why his events are marred with violence, his followers are people who haven't been educated to a high enough degree to know that they're supporting this generation's version of Hitler. And who is using what Hitler knew without the awareness of it, so it comes flooding out of him because he has been normalized to arrogance and has no control over it, it's so normal.

At this point in history it only takes a single nuance impression from someone like Donald Trump (authority figure previously elevated by media or observed behavior modeling) for others to reflect it to an elevated degree. Behavior that has been modeled from an authority perspective approves the behavior modeling pattern. These principles or equivalent level of understanding under different names, you can bet, are all exploited by recruiters of terror soldiers.

A suicidal person anywhere in the world is reflecting the post-traumatic stressed out environment that modeled to them their condition. So a 'Psychologically Caged Animal' is capable of

lashing out against others whom she or he feels, or has absorbed negative behavior modeling against, is responsible or liable for their material conditions. The more historical the behavior modeling has been, the deeper will be the normalization of the discrimination. Including if it has been modeled to you that your own people or life in general, has little apparent value.

One way, just to provide an example, that one might apply an integration and normalization to such agitated individuals is to reinforce the common theory throughout many religions; that the body is thought of as a 'vessel for the sole'. The sole continuing to exist beyond the current life contained in your now 'temporary anyway' material body.

Now as I edit this, the immense tragedy at the Orlando Florida night club Pulse, has just happened the other day sadly. I have already learned of two nuances of bias that came from the shooters father which were negative reinforcement impressions of and about homosexuality. Yes he was also inspired by ISIS they say, but they hate everybody equally! So why would someone, who it seems acted mostly independently, choose a Gay night club to attack over another location?

Well, what if it was his father, by historical repetition and intimate access, had done to his own son what Hitler did to a generation of Germans. They learned their bias in early childhood and it was reinforced throughout their development, and so had behavioral attitudes modeled to them as normal behavior, and part of content that an adult recognizes as intimate group behavior modeling.

Production Statistics

The following statistic I gathered together from my own work experience, and I would like to add it to this chapter because it highlights the scale of how much we are producing beyond our immediate and near term needs. All to support a ‘Cancer economy’ of limitless growth which we support and protect because materially our lives now depend on its health and good functioning. So how much are we over producing beyond our immediate needs?

This statistic was generated from the record of my own labor, working on and off, on many different types of construction projects producing units for human living. Your production is more than likely different than mine was, but, all of our production is on the same scale between the amount that we and our families need for living, and the amount that we actually produce.



Where is the humanness in these homes? They are units designed to extract as much profit as possible out of as little investment as possible. Where after all is the unique imprint of the workers and the materials originality in these?

I added together the number of living units that were constructed to completion when I was present at work for 40 hours per week on average. The total number came close enough to be able to round it off at 525. This was a conservative estimate because I always counted a minimum number of units when I was guesstimating, which I was for some of the larger projects that I worked on.

The work was accomplished over an 8 year time period, working on and off through disruptive market cycles, for different companies, and frequently on different kinds of buildings.

I estimated for a crew of 50 people doing the work, enough to assemble the produced parts of the building in preparation for habitation. As one person of that 50 man crew, I had personally contributed a ratio of 1:50 of the labor that went into completing each unit. A few other workers would regularly work 12 – 14 hours a day, contributing much more than 1/50th each as well. To keep the estimate conservative I based this estimate on 1:50 of the completed work.

Here is the breakdown using those production numbers which were...

Production was spread over an approximate 8 year time period.

Living units assembled by 50 people over 8 years
= 525

I personally completed 1:50 of the work as 1 of
50 estimated workers.

Average estimated number of bedrooms per living
unit = 3.5

Average estimated number of bathrooms per living unit = 2.5

Average number of kitchens per living unit = 1

Each home will last for an estimated 60 years if it is well maintained.

525 produced living units over 8 years divided by the 50 workers = The 'labor equivalent' of 10.5 fully completed, 3.5 bed, 2.5 bath, 1 kitchen homes produced by each worker over each 8 year period. That's equal to 1, 36.75 bed, 26.25 bath, and 10.5 kitchen home!

Each home will last for about 60 years if it is well maintained. 10.5 homes multiplied by 60 years each = The equivalent labor of 1, 3.5 bed, 2.5 bath, and 1 kitchen home for 630 years if stacked consecutively! This is an accurate estimate showing the scale of how much is produced over 8 years using a ratio of 1:50th of a production crew.

How much do all the workers together produce at a ratio of 1:50? 10.5 homes X 50 workers over 8 years = 525, 3.5 bed, 2.5 bath, 1 kitchen homes. That is equal to the production of 1, 1837.5 bed home with 1312.5 baths, and 525 kitchens, for every crew of 50 workers over each 8 year period! Somewhat more than they and their family members who are also engaged in production in some way, will ever need in their lifetime. But that was only measured over a short 8 year period, when a humans working career will last approximately 45 years!

Over 24 years for example, 50 workers working full-time produce 3 times 8 years of production at a rate of 525 units, that equals 1575, 3.5 bed, 2.5 bath, and 1 kitchen living units.

It's comparable to 1 completed 5512.5 bed, 3937.5 bath, and 1575 kitchen home.

You could argue quite fairly that it takes many more than just 50 people to produce a unit for living in. When you include the labor and materials required in producing and delivering all of the tools and engineered materials that were required to do the job it is a very substantial amount.

At a ratio of 1:100 each worker would have performed the equivalent labor of producing 5.25 fully completed, 3.5 bed, 2.5 bath, and 1 kitchen homes. Applying a ratio of workers at 1:525, each of those workers would have 1, 3.5 bed, 2.5 bath, and 1 kitchen living unit completed after 8 years of steady production. Even at a ratio of workers at 1:1050, each one of the producers could have 1 completed standard sized living unit completed after 16 years of labor with nothing left outstanding.

Yet in the world we live in, after 8, 16, and even 24 years and longer these days, very few of these 50, 100, 525, or 1050 workers will own 1 regular sized living unit! They would have also worked under stress from time to time, to meet production deadlines or through personal turmoil for example, even working when ill. They could have 'had' to work, without the option not to, because of heavy debt load or to support high overall monthly expenses without going into debt.

They'd have worked in miserably wet, extremely hot, or bitterly cold weather, depending on the climate and seasonal changes where they live. Many of them likely spent more time away at work than in quality time with their own families!

They might have been berated for being 1 or 2 minutes late for work in the morning. Sometimes people are bullied on the

job, particularly by their supervisors; their job often terminated if they are perceived as being somewhat slow at tasks or dim-witted, instead of a pro-active approach which is a possible strategy. As well, frequently working through small injuries and chronic pain is commonplace throughout the wages earning workforce.

This leads naturally to reason that we do our production to satisfy our historically acquired need for money, earned by exchanging our mental and physical labor for market-based wages. Our production then was not for the thing that our labor produced, but for the money our labor would earn. Your paycheck will very soon be exhausted, and needing to be regenerated in perpetuity!

It is very much like Cancer because it propels labor at an artificial rate. Because our social relationships have been historically engineered to, 'caste' or 'behavior model' the workers value down in this way. The beginning of this of course happened 1000's of years before we were even born, making it normal to us because it was already well developed, and was always there as we developed. The impact of a modern house that destroys and displaces other life forms, and also degrades the environment for its parts is substantial.

In contrast!

Imagine now one Aboriginal person working as 1 of 50 family group members, building a home they were accustomed to. For example let's say that they had to build the equivalent of 1 new home each year to meet their ongoing needs. How much would they have produced?

Each $1/50^{\text{th}}$ of workers producing 1 new home each year contributes $1:50$ of the total labor to construct each structure.

Over 8 years then, 1 Aboriginal worker would have contributed $8/50^{\text{th}}$ of 1 typical home.

Over 50 years, 1 Aboriginal family group member working as one of 50 would have produced the equivalent labor of 1 typical dwelling unit.

I could have doubled their production needs for this estimate, and they still would have only produced the equivalent labor of 2 homes over 50 years.

So we didn't develop from a species that was always wantonly wasting energy. The Aboriginals would never have been under any stresses that they were not already normalized to. They would not have had production deadlines or production minimums. If they were ill and didn't work for a few days no one would question why, in fact they would have shown you their concern for your wellbeing. If the weather was cold, wet, or windy she/he wouldn't have 'had' to work. They would have done all of this production with their own family group members, and the children would learn themselves by watching, helping and doing in stages as they developed.

If one day you didn't work, it wouldn't matter if you didn't get paid because there was not even the previous knowledge of money to think that you needed it. They never would have been "late for work?", and no one would have called them, "lazy", or "slow". They would have worked through injury and pain to a higher degree than us. But their work always would have been for their family's immediate need and use. They would never have owned it but could use it whenever they wanted to, and it

was 100% biodegradable. If they had produced a surplus of living units they would not need to work again until it was needed.

The Impact of Circumcision

As someone who has been trained to analyze the environment of young children, nothing that happens to them including the nuances should escape analysis and open discussion by their care takers. For example, circumcision in human ‘culture’ is a subject that constantly receives a socially normalized response, so the practice continues among a majority of groups.

Circumcision performed on infants is a temporary pain that usually dissipates almost immediately after a successfully performed procedure. The real impact though will not become apparent until the time that the children have progressed up to their sensitive period for sexual development. Finding themselves ‘curtailed’ in their spontaneous behavior by their ‘socially acceptable’ genital mutilation.

Statistically in Humans, most auto-erotic activities occur in the period of adolescence. Considering that, it is likely this period is a ‘sensitive period’ for sexual development. Functioning in most likely the same pattern as other sensitive period’s do, such as those observed in earlier childhood. Because of Montessori’s pioneering work we know that satisfaction of those particular sensitivities leads to a maturity and satisfaction of what they were temporarily sensitive to; or adversely resulting in a corruption of behavior upon outside interference with those particular sensitivities.

Under this light it is puzzling as to why we circumcise infants and not fully developed adults who have passed that period of

sensitivity, and also who have made the conscious decision to do so. It prevents males from satisfying their own sexual needs automatically when they happen, qualifying as an interference.

The skin on the Human Penis functions like a rolling cover that aids in satisfying auto-erotic needs, as well as improving reproductive health and success. The careless removal of this 'ugly skin' can only add a negative nuance to ones developing psyche, stunting and corrupting their potential sexual maturity from what was potentially 'normal'.

When the Human male genitalia is blunt stabbed towards the female genitalia by design of the foreskin works to open the labia, aiding in reproductive success. When contact under force of pressure is made, and the foreskin is pulled back by a nimble-fingered Human hand, it pulls the labia apart very effectively, quickly placing the moist openings of the reproductive organs in direct contact.

Regular ejaculations ensure that a supply of healthy semen is always available at the front of the production line, among having other health and wellness benefits. Female masturbation is also related to many health, wellness, and reproductive benefits. The foreskin which is part of all of the skin on the penis also significantly reduces friction during copulation. And the many nerve endings at the end of the foreskin are most likely for detecting moisture, aiding significantly to 'natural' reproductive success.



OBSERVING HUMAN BEHAVIOR WITH A NEW UNDERSTANDING OF HUMAN NATURE

Following is a small collection of examples of Human groups, and of individuals that reflected their unique environments down to the nuance. Reflecting that we are not intelligent, but that we historically absorb and reflect our intimate environment, in much the same way that I believe all the life that pre-dated us had existed.

The population of Germany leading up to WWII

The German population reflected the ideology of the state because they were also under the influence of intellectually applied behavior modeling. The Nazi's and their Fascist Capitalist Leaders had a whole arm of organized government aimed at propaganda, and used known scientific behavior modeling tools like authority perspective, accumulative effect, normalization, and integration.

Some German citizens claimed to have no knowledge that the Holocaust events were taking place, something I know that many people scoff at. But what if that were never presented to them that way in their own personal environment to have been witnessed and recorded by their sensors?

After all, one of Goebbels main jobs was to make sure that the Nazi Party was always promoted in a positive light. Therefore if you never saw the bad light, from a behavior modeling perspective, there was no bad light, only the one that they personally witnessed which did not approach that level it turned out to be. Individuals living under authoritarian fascist regimes learn very quickly that you can do okay for your-self and your family, as long as you don't say, write, or promote any-thing that is against the State.

We are the equivalent of Pavlov's Dogs but with intellect. Humans are classically conditioned by their own family group because we very sensitively absorb and reflect nuances of behaviorisms. We are conditioned as a society through mass media, and are thus Socially Conditioned. Each exposure of groomed behavior modeling broadcast over the authority of media becomes a part of an accumulating, group dynamic wide, behavioral conditioning.

Victor, the savage child of Aveyron

As mentioned earlier, this boy who was 'normal', expressed joy when stimulated by the sudden warmth of the sun or a gust of wind. He reflected a deep affinity for the environment which were his only companions as he developed. He also reflected that a majority of human behavior modeling was unavailable to him during his absorbent early growth period, and throughout his early life.

The Children in Maria's experimental Classroom

The children in Maria's experimental school were not subjected to the authority that is often wielded like a psyche damaging sword by traditional teachers. Teachers do this because they've arrogantly been taught that it is them who must 'teach' the children. Children

whom they don't historically know. Therefore they display arrogance in nuances of their behavior. Now a condition of ignorance because they've been taught to teach this way as normal.

Children don't magically make themselves absorbent for learning when they arrive at school in the morning. Learning is happening all of the time in children and adults, meaning that we as a species are always absorbing and storing that information. The children that Maria assisted-to-education reflected in their behavior that they had absorbed in an environment that was free of arrogant oppression, and was rich with organized sensory inputs. This allowed a confident, happy, and charming personality to unveil itself because it had been fostered by their environment all along.

Maria's results prove the massive difference between an education that was behavior modeled by adults, and education that you yourself acquired by auto-exercise under thoughtful, thought-out guidance. It is actually easily observable in how calm and confident Montessori school graduates are, especially when compared with children attending State sponsored educational institutions.

Neglected Children

Neglect is sadly what these children absorbed. Their environment lacked in an accumulative effect, the basic behavior modeling and care that a human needs for further development later on. These children reflect that they were neglected in their observable behavior. They are actually normal though, considering what they experienced as they developed. They did not receive enough appropriate human behavior modeling in their absorbent early childhood when they needed it for their normal development.

Behavior Modeling TV Programs

These types of Television programs lead unsuspecting persons into unfamiliar situations. Although they are not experimental, they record Humans in situations where they're often being behavior-modeled-to from an authority perspective. A favorite clip of mine is when subjects entered an elevator full of people who were all facing the rear of the lift. It appeared that most subjects were aware that something was unusual, but would eventually face the rear of the car also. Our will is bent in real-time by the observed behavior of the others, and by previously established authority figures, and or family group members having an accumulating effect.

Behavioral modeling is why observed violence sometimes erupts into all out riots. The modeling the brain receives justifies our behavior in the heat of the moment. For example then, if you were anticipating a riot after a sports game for example; you could have tailored the environment to provide healthy outlets for releasing their stress under controlled conditions. It would be a more cost-effective approach than allowing wanton destruction of property that you were already anticipating anyway.

The Zombie Apocalypse/Fiction Generation

What better word could be stated these days, that truly captures the intellectual capacity of today's highly stressed and disconnected generation? Fiction, is an important thing to be aware of. Perhaps if the population that heard *The War Of The Worlds* in 1939 had been coached beforehand in identifying fiction over truth, there would have been a lower percentage of panicked people.

Now there is so much fiction in the environment that it is filling our brains with ‘white noise’ that has too much exciting media violence in its construction. Most media produced for our ‘entertainment’ is fiction based that displays individuals under stress, and or shocking images. That’s because it’s triggering our brain to release drug-like hormones, similar in intensity to a sugar high that you wouldn’t know had happened. The content is in general a work of fiction which opens up the opportunity to be able to integrate nuances of whatever you wanted to.

When the storyline itself is not reality based, it becomes easy to ‘embed’ behavioral nuances because you can present an idea under the guise of a fictional work that was not intended to be factual in any place, so they will say in their defense. The nuances have the same behavioral impact on the viewer though. Our brains are not sorting that behavioral information into a fiction and a non-fiction category. Making their normalization even deeper because yet another nuance has been added to that model.

What embedded, nuanced information like this does is to placate you to your material conditions, ‘as normal’. It is a common theme in many movies for the bad guy to go into a rant at some point, and refer to “The evil nature of man.” to explain away their errant behavior. It’s actually a nuance that’s deferring the responsibility onto something externalized from you, and beyond your ability to influence.

Because we are automatically interpreting everything through a behavior modeling brain, and not one based on superior intelligence. It’s not factual information that is based on a totality-of-knowledge. After the movie you’ve been exposed to a nuanced stated opinion that’s added another layer to your normalization.

James Paul Bilous

Modeled from an authority perspective to an organism that absorbs and reflects the behavioral nuances in its environment.

TRIBAL ABORIGINAL SOCIETY AN UNDISTURBED MODEL FLUIDLY ADAPTED

I think it is important to establish a new basic understanding of just what is ‘normal’ human behavior; considering that we are now aware of the processes that Hitler and Mussolini knew about. Most Humans whether they know it or not, want to work towards the satisfying goal of equilibrium with the environment, which is what’s normal. To do that we must first understand what, and where we are exactly before we can take a next step. This is similar in methodology to Montessori’s teaching approach which is progressively accumulative.

She had learned from Itard’s valuable work to observe the nuances of ‘natural’ behaviors. It’s the main reason why she did not suppress the children’s ‘spontaneous’ activities. Otherwise you would be observing their influenced behavior, which is not a true reflection of their ‘natural’ behaviors, but would rather be a response influenced by other Humans.

If we imagined that we could see out through the eyes of an infant born before an intellectually influenced family group, and visualize experiencing things as they grow, we might gain some further insight into ‘normal’ Human behavior.

Close your eyes if you like, and think back to any time between 12,000 – 40,000 years ago. Imagine seeing through that infants eyes, every day, from the day that it was born. What would you see? How would you feel? If you were ever cold it was short lived because if an infant is cold often, their survival rate overall will be poor, and they were surviving quite well, taking very good care of their young.

How many times would you have looked at the mouths of those around you who were talking? How many times would you have witnessed family members testing and manipulating the environment? At what age, after a series of self-applied experimentation, what is really fluidly applied integration, would she or he be able to produce their first finely manufactured product?

You would have learned how to survive from a collection of behavior modeling that the brain absorbed, and the muscles exercised through a course of initially sensitive development. Muscular Memory counts as real memory because it added to the whole memory that contributed to the model of understanding. All of which you have literally absorbed through your sensors from your family group.

Who lives in this family group? People from a region far away whom you don’t intimately know, like it is now? No, your family group would have been a collection of siblings, grandparents, uncles, aunts, cousins, nieces, nephews, and with

enough genetic diversity to sustain itself, all of whom your personality will be modeled after.

As you developed, all of the people around you would know your whole life history, and you would know theirs as far back as you could remember. You would have developed in accordance with natural laws that flow, not conflict. Most importantly of all there would be no arrogant authority telling you what you are, filling you with fear, or telling you by behavior modeling if you're good enough. So you would become a fluid part of all the life around you, supported within the bosom of your intimate family group.

You would have worked from an age that most now consider illegal child labor, and you'd be happy and feel normal doing it. When you do or practice the work of living, it doesn't feel like work, it feels like living, undisturbed by the interference of arrogance on your historical family group behavior. Applying Organism Theory to Humans whom are intellectual, efficiently absorbing and reflecting organisms, we can infer the way each of us learns how to survive.

We learn how to survive by fluidly absorbing the behavior we observe which should be the work of living. Driven by a psychic motivator in early childhood we are drawn to integrate ourselves with all parts of our environment, and through our individual development we practiced those observed skills of survival in order to perfect those movements. Movements that we must master quickly so that we can use them to help us survive immediately.

The perfection of a Human's personality is intrinsically caught up in the quality and quantity of their observed behavior

modeling. An Aboriginal's behavior would be formed from exposure to everyone in the whole group, and not just a socially and economically isolated mother and father as is our normal today. Having attained a model of the whole life process from different individuals of different ages and sexes can only support ones socio-psychic development in achieving an internally perfected personality that is a Human's 'normal' within the group they are born into.

Having exposure to the many different ways that different individuals manipulate objects will add to the repertoire of experimentation that you would employ when manipulating the same objects yourself. We can only reflect from the specific information that was absorbed. Behavior modeling is added to ones personally collected totality, and reflected back out through the filter of your unique personality.

IN CONCLUSION

We are an organism that absorbs and reflects what's in our environment, meaning that everything Humans are reflecting is what they've absorbed. We're not reflecting that we are like Hitler's Youth because we were not in their environment, therefore it is not the fault or responsibility of the working class population or of any one individual outside of Mussolini, Hitler and their leaders, who knew very clearly, and for a long, long time what they were doing.

What people are capable of these days is extremely horrific, and sadly it's a reflection of their historical environment, exacerbated by immediate conditions. But can you judge an organism guilty of a crime if it is an organism that absorbs and reflects its environment, which historically behavior modeled the conditions that led to the crime in the first place? No you cannot! Absorbing and reflecting the nuances in our environment is what's normal for Humans to do, under any sort of conditions! And it's all getting exponentially worse!

There are only intermittent nuances present in a majority of people's environment that broach the real gravity of our can-

cerous predicament. We're now scientifically aware of the damage being done to ourselves and to the planet, but are continuing with the same, 'old' behaviors anyway. This is the result at the very leading edge of an historical accumulation of applied intent to suppress; broadcasted from the arrogance of leadership that was always applying a jealous and selfish-based, fascist behavioral strategy. Therefore the arrogant 1% has historically modeled the behavior of the 99% under these conditions!

Capitalists are not in the business of working for working-class independence, and have historically suppressed those interests to protect their spoiled positions, and for no other reason! They protect themselves with the 'freedom' to celebrate arrogance to no limits because the laws favor them in nuanced human behavior modeling communication.

That's why corporate leaders are often obscenely rewarded, it's their pay for showing good or impressive arrogance. That's also why the CEO of a large company will receive little or no punishment for committing major infractions that often involve millions of dollars, while regular people can be imprisoned for many years over items worth just a few dollars. These decisions actively behavior model to us that it's normal or right somehow, because our leaders are setting the example, it must be okay.

It's no wonder that we're becoming an even more dumbed-down population, it's all modeled to us as if it were 'Hitleresque normal'! In fact, what we think we know about recent Human civilization has always really been centered on the influence of arrogant behavior modeling by 1% of the population. It is therefore not honestly representative of 'natural' or 'normal'

Human behavior because they had been historically influenced by a small fraction of their group.

We believe that our State exists to protect our interests against others. In reality the State is a vicious hierarchical group that holds its own population under intellectual and behavior modeling influence. Protecting the personal interests of Capital's 'rite' to profit to the maximum degree, and the bias presented by the Media and Government normalizes it all. This puts an unaware and untrained Human mind in the same general state as one of Hitler's Youth, who were unable to see or behave beyond their normalization, at least over a short term.

It's a parasitic relationship that's based on an intellectual organism's primitive display of jealousy, simply because a normalization period took place. And by their intellectuality have always projected a protectionist bias that we know as fascism, whether it was intentionally amplified or not.

Any Title that grants authority or protection over others, has the potential for an arrogant response. We can see in everyday life that upon an individual's first graduation into perceived rank or hierarchy, nuances of arrogance can be detected in their behavior, affecting a high majority of people. When the Romans granted citizenship to individuals, it graduated them in such a way that nuances of arrogance could have been detected in their behavior that were not there before their promotion into society.

From what I can see that was influencing the behavior of German citizens during Hitler's era was that they had actually developed a culture of 'behavior modeling from an authority perspective'. For example, high ranking officers were usually

modeling the behavior first. Similar to the way that Hitler promoted and knick-named the most vicious individuals as models to broadcast the desired ‘normal’ behavior. During WWII it was normally always a high ranking officer that personally took responsibility for activating the varied devices that they used to murder. That was, by the Hitleresque definition of behavior modeling, ‘behavior modeling from an authority perspective in an accumulative effect’.

Also, the many small groups of youth were being ‘behavior modeled to’ in the same manner. Each group of youth had an adult leader who would have been hand-picked for the job, and coached in modeling behavior. It is quite easy to arrange circumstances where behavior modeling can even be ‘acted out’ in front of children ‘as normal’. The children would not be intuitively aware that this modeling was pre-engineered for them. It’s the child’s work to absorb and reflect their unique group dynamic behavior because they need it for survival. It is not in their capacity to judge it first, and neither are children possessing intelligence to protect themselves from it.

That Humans have a weak response in the first graduation of authority demonstrates that this social arrangement was not in our presence throughout our evolutionary history. Had authority or a precise hierarchy been normal to us on a historical scale there would be no noticeable behavioral changes post-graduation of authority. Had that behavior been normal on a scale of historical integration our behavior would not be affected by arrogance the way it is; because some mechanisms of a normalization would have developed over time in response to the constant presence of that stressor.

Promoting and rewarding a select few individuals, highlighting them with behavior modeling, raises their status above a majority of the population. This happens in the exact same way as others can be casted down but in the opposite direction. The media where I live is generally casting 'up' the specialness of 1% of the population. This observed behavior modeling by default places us in a lower caste because we're not treated in the same way as are the people granted title and authority, and who you have witnessed receiving group recognition.

Group recognition itself is much more important for human well-being than we are aware of. Imagine what 99% of us would think, if in an accumulating process we only saw a small minority of our own family group members treated with, technologically-enhanced, and rehearsed displays of behavior modeling? It would be very hard to think outside of that fully-formed box as an adult. Based on what was accomplished in a single generation by Hitler's intellectually aware behavior modeling.

We have a group dynamic circle wide behavior modeling disorder that developed to its current form primarily because of the language used by intellectual organisms that absorb and reflect their environment. This led on to arrogance eventually, and finally to the selfish ownership of the products of Human production. And these days, at the leading edge of the life process we have for example, The Military Industrial Complex 'as normal'. This is why we're not behaving in a way that reflects a harmony with the environment, we're reflecting the arrogance that's been historically modeled to us!

Although we can't see the bars of our cell, we can feel them there in our psyche. It is an accumulation of restricted move-

ments that caused us harms, quite similar I think to what is called Nature Deficit Disorder. It certainly is also an intellectual restriction from a totality of knowledge because it literally narrows your potential thinking parameters over time. But, it is a matter of what we have absorbed which can be modified at your own pace if you consciously apply yourself to a positive integration.

Why else would an intelligent species maintain its destructive behavior after it has learned that it's complacent in the accelerated destruction of the environment? The same environment that it depends on for survival, and was historically necessary in our creation, and therefore is the equivalent of our mother and father. It's because there was never intelligence in the first place.

We now know no other way to act because our 'behavior-modeled education' has led us only to ignorance! Just like one of Hitler's Youth's, there was nothing else in their environment that told them any different. The intent to suppress and influence in a Hitleresque way is actively applied towards historically maintaining and protecting the arrogance of possessing Capital at the behavior modeling level.

Modern Human social structure is essentially a propaganda war that the 1% who were historically doing the behavior modeling for the 99% always win, because originally they claimed to communicate with God(s) when no one else had before. But now you and I know that they learned how to control Humans with applied intellectual integration of normalizations, which is a process that you and I can participate in as well, for the good of course. That gives us a real edge to begin working from.

So maybe all is not doom and gloom after all. And I never said that there was less value in us or in other life forms because maybe it seems to you that we are so simple being, ‘just’ life, we’re not simple creatures at all, and nor are we worthless. We have been ‘behavior modeled to’, and so we can learn to influence those forces as well. Now knowing how they did what they did, we can all apply the same forces to counter that negative influence.

We are able to think about life in terms of the systems and principles of how organisms live to examine where we are presently. Maybe with time we can learn to see ourselves as an alive, conscious part of that living system, and not lording over everything the way we are. We could progress from where we are by applying the knowledge of an accumulating course of integration as a model of how we could proceed towards a goal of equilibrium.

Adults cannot be remolded again as their sensitive period for absorbing without limit or restriction had passed in their childhood, and for the most part are set in their ways. It is the children not even conceived of yet who will inherit the life that we’ve handed off to them. They didn’t ask to inherit things the way they are, and neither did we.

Human history will continue its current accumulative course of progression until something that was not there previously becomes noticeable, and then grows up to replace the old inadequate system. But as long as leaders keep reaping the profits of what is best in Humans we will never be fully human, we will only get progressively further away from it.

My opinion of the situation is that we have to first learn to recognize nuanced behavior modeling, then aim those tools (not their content) they are using against us, back at them. Change

cannot come from the children first because they will reflect their environment to the nuance, regardless of what's in it. Adults also absorb and reflect their unique environment because in every instance they do. So unfortunately, the change that we need to see has to begin to grow from these poisonously normalized adults. Perhaps it is possible if they are made aware of all the environmental forces that are working against them; they might realize that the 'Zombie Apocalypse' was just another nuance that further diverted you from learning to care about what's really going on 'behind the behavior modeling curtain', and become an active part of Human sociological evolution.

We are the result of living in a historically fascist state of being, and haven't realized it because it was always presented to us 'as normal' by arrogant individuals over evolutionary time. Consolidated Human leadership over time takes over the independent thought of the group members because leadership is always seeking to reinforce and protect its spoiled position. So it teaches the majority by its behavior modeling to see from its own perspective, which is the class society that we find ourselves completely normalized to now.

To live this way is so far from normal that the majority that are told it is normal actually believe it because it's now being behavior modeled to them with the applied intellect that Hitler and Mussolini knew. When you think of humans and how they are, or were behaving, apply Organism Theory to them. Their behavioral attitude or beliefs then can only be a reflection off of their unique environments. Meaning that they are not independently intelligent from the others, only potentially intellectual based on what was there. Of course we do have the

capacity for an intelligent response if we were free to study the whole of the Human environment, free from historical behavior modeling limitations.

The End

BIBLIOGRAPHY & ACKNOWLEDGMENTS

Quoted References:

Excerpts from THE ESSENTIAL MONTESSORI by Elizabeth G. Hainstock, copyright © 1978, 1986 by Elizabeth G. Hainstock. Used by permission of New American Library, an imprint of Penguin Publishing Group, a division of Penguin Random House LLC. All rights reserved. Any third party use of this material, outside of this publication, is prohibited. Interested parties must apply directly to Penguin Random House LLC for permission."

Sinclair, Upton. © 1922/23. The Goose-Step Study of American Education.

Itard, Jean Marc Gaspard. First Published in 1802, AN HISTORICAL ACCOUNT OF THE DISCOVERY AND EDUCATION OF A SAVAGE MAN, OR OF THE FIRST DEVELOPMENTS, PHYSICAL AND MORAL, OF THE YOUNG SAVAGE CAUGHT IN THE WOODS NEAR AVEYRON, IN THE YEAR 1798.

Other Research Sources:

Montessori, M. The Discovery of The Child.

Montessori, M. The Secret of Childhood.